

Physick

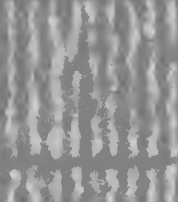
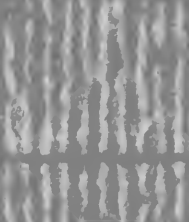
NINETEEN

TWENTY

NINE

1929

*Ex
Libris*



Digitized by the Internet Archive
in 2009 with funding from
University of North Carolina at Chapel Hill

<http://www.archive.org/details/phipsicli1929elon>

Lots 116-117

Phipsicli
1929



H. T. EFIRD
Editor

G. E. RING
Business Manager



The
PHIPSICLI

Volume XV
1929

Wisdom is the principal thing: therefore get
wisdom So that thou incline thine ear
unto wisdom, and apply thine heart to under-
standing—Proverbs, 14:7; 2:2.

Published Annually by the
Senior Class of Elon College
Elon College, North Carolina



DEDICATION

To

Pleasant Joseph Carlton

Captain of Industry, Trustee of his Alma Mater and her Benefactor, whose generosity stands unmatched in magnitude and in its spirit of lofty devotion, in all things the sincere Christian.

*The Class of 1929
Dedicates this the Fifteenth volume
of the
Phipsicli*



Pleasant Joseph Carlton



FOREWORD

*In the fifteenth volume of the *Thipsicli*, we wish to present to our fellow students, alumni and friends a brief review of the days spent at Elon and the many happy hours they brought to us. It has been our endeavor to publish, not a book of present value, but a memorial, so that we in future years may turn the pages of this book and recall the associations, happy hours, activities, and proud achievements of the students and Dear Old Elon.*

The Editor.



CONTENTS

Book One
The College

Book Two
The Classes

Book Three
Athletics

Book Four
Features

Book Five
Organizations



MARGARET LAWRENCE.



H. E. FIRD.



G. A. COX.



JEWEL TRUITT.



G. A. WALKER JR.



BIRDIE ROWLAND.



MILDRED JOHNSON.



G. E. RING.



W. P. LAWRENCE.



A. W. LAXTON.



H. S. SHEPHERD.



MARGARET JOHNSON.

THE PHISCI CLUB STAFF



Book One

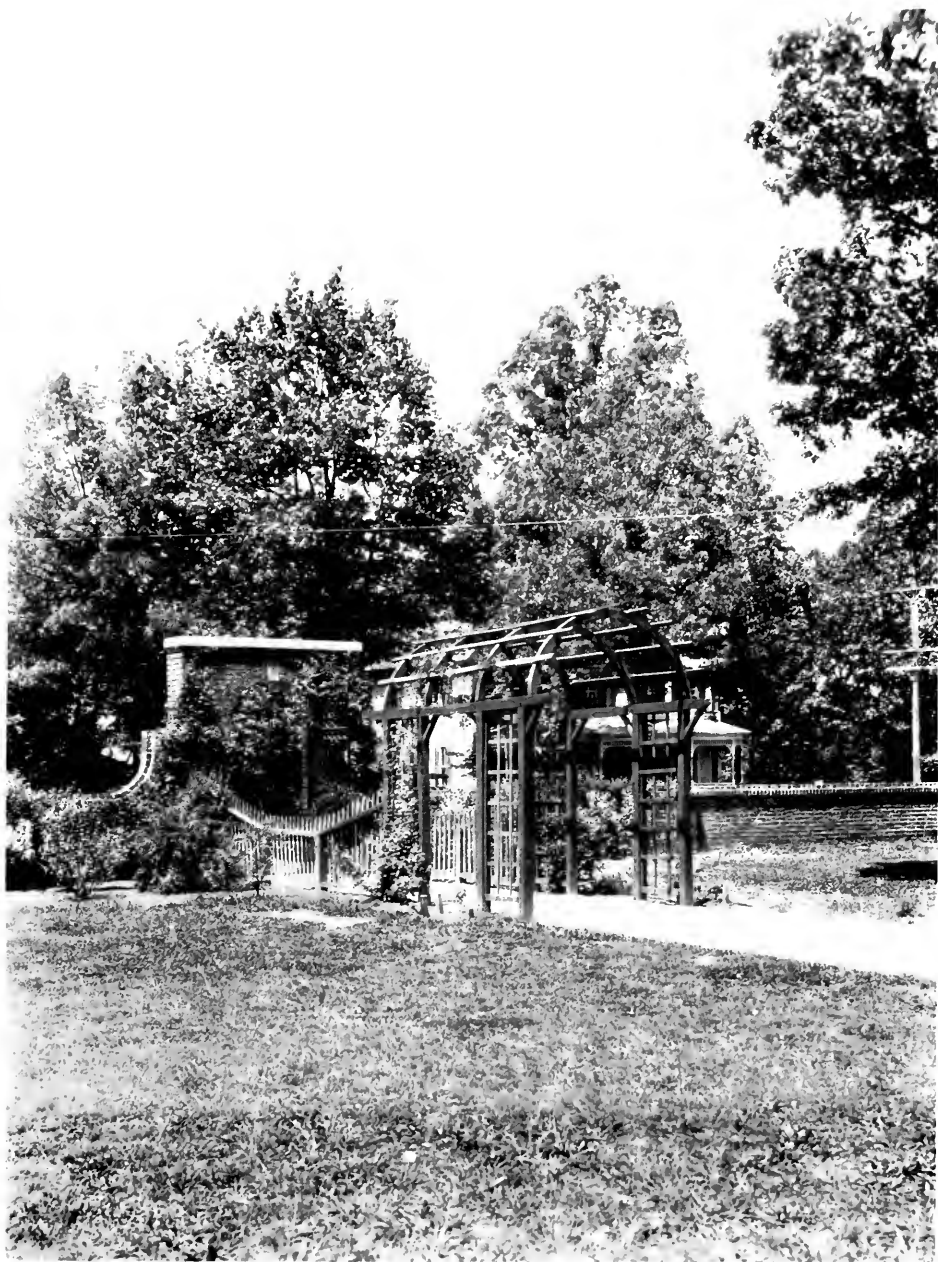
The College



Gateway to the path that leads to knowledge.



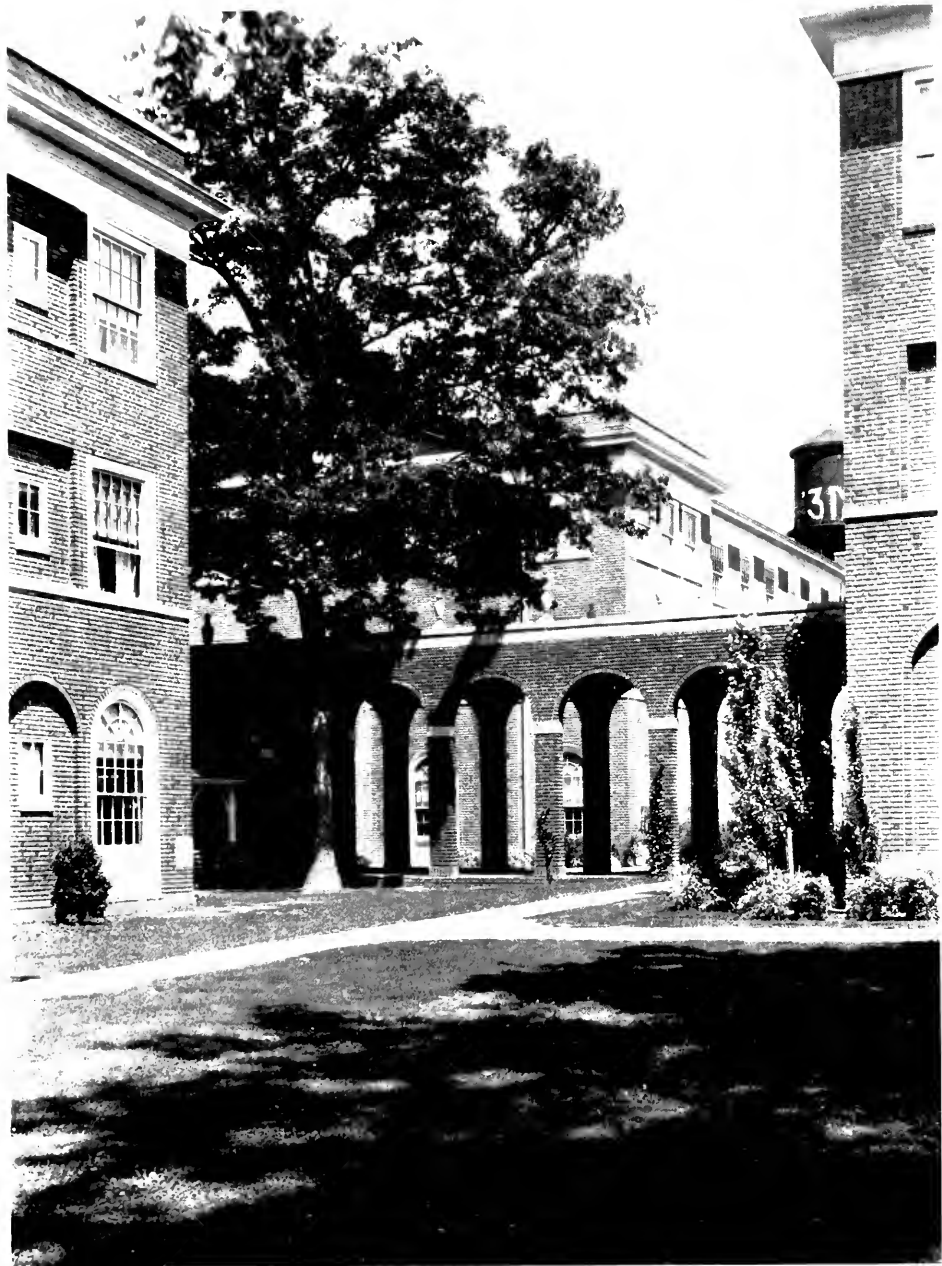
Herein may always be found the Divine Comedy, but The Plastic Age never.



Aesthetic rapture for man or maid—and what you will for man or maid.



Duke Building, where the obvious is rediscovered.



Intersection of Colonnades. Noted place for midnight meetings.



Imbued with knowledge, surrounded with beauty.



Summer's grand Finale before the dirge of Winter comes.



Whispering silence, where penetrating notes occasionally fill the air.





WILLIAM ALLEN HARPER, A.M., Litt.D., LL.D.
President



ALONZO LOHR HOOK

Dean of Men; Professor of Physics

A.B., M.A. Elon College; M.S. Cornell University; Graduate Student Johns Hopkins University.



LOUISE SAVAGE

Dean of Women; Librarian

Student at Randolph-Macon Women's College and University of Virginia.



JNO. URQUHART NEWMAN
Professor of Greek and Biblical Literature

Litt.D., graduate student, Yale University; Ph.D., D.D., University of Chicago; Northfield Bible School.



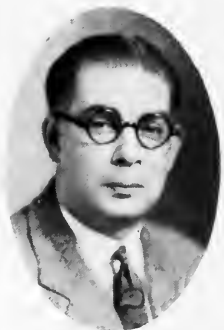
NED FAUCETT BRANNOCK
Professor of Chemistry

A.B., M.A., Elon College; Litt.D., Defiance College; graduate student, Johns Hopkins University; M.S. in Chemistry, Columbia University; Assistant Instructor in Organic Chemistry, summer school Columbia University; graduate student and visiting professor, University of North Carolina; member of American Chemical Association.



THOMAS E. WHITE
Professor of Spanish

A.B., Elon College; ex-missionary to Porto Rico; graduate student of University of North Carolina.



RALPH B. TOWER
Department of Business Administration and Economics

B.B.A., cum laude, Boston University; College of Business Administration, M.B.A., University of Boston; graduate student, Cornell University; Candidate for Ph.D., Duke University.



THOMAS C. AMICK
Business Manager; Professor of Mathematics

L.L., University of Nashville; George Peabody College for Teachers; Ph.D., Central University; graduate student, University of Virginia; University of Chicago.



DR. W. M. JAY

A.B., Defiance; M.A., Ohio State University; D.D., Elon; graduate student, Chicago University; University of Virginia; Columbia University.





O. W. JOHNSON

Professor of Education

A.B., Elon College; M.A., University of Virginia; Professor of Education, summer school, Appalachian State Normal, Boone, N. C.; graduate student, Peabody College; instructor, Peabody College.



HATTIE E. BROWN

Assistant Professor of English and Latin

A.B., Elon College; M.A., University of Virginia.



J. W. BARNEY

Professor of English

A.B., Elon College; graduate student, Columbia University; graduate student, University of Wisconsin; graduate student of University of Virginia.



THOMAS E. POWELL, JR.

Professor of Biology and Geology

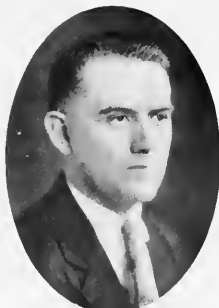
A.B., Elon College; M.A., University of North Carolina; graduate student of Cornell University; graduate student of University of Chicago; graduate student, Duke University.



L. D. MARTIN

Professor of History

A.B., Elon College; M.A., University of North Carolina; graduate student of Yale; University of Chicago.



M. W. HOOK

Professor of Mathematics and Engineering

A.B., Elon College; graduate student, Yale University; Alabama Polytechnic Institute; first president of Bethel College, Wadley, Ala.; graduate student, University of North Carolina.



SIMON A. BENNETT

Professor of Christian Literature and Methods

A.B., Union Christian College; A.B., University of Illinois; M.A., University of Chicago; graduate-student of University of Chicago.



C. GUILLET

Professor of French

Victoria University; B.A., Ph.D., Clark University; student at Harvard; student at Johns Hopkins; student at Columbia; studied abroad eighteen months.



A. R. VANCELEAVE

Professor of Philosophy and Social Science

Studied at Union Christian College; A.B., Indiana University; M.A., Chicago University; Candidate for Ph.D. at Indiana University.



SUE RAINE

Household Arts

B.S., Harrisonburg State Teachers College; M.A., Columbia University.



D. C. WALKER

Coach

A.B., Vanderbilt University; professional baseball, Rochester, N. Y., International League; Coach Columbia College, Lake City, Pa.; coach at Atlantic Christian College; professional baseball, York, Pa.



SARA GEANETTE STOUT

Expression and Education

B.O., King's Expression College; Candidate for A.B., Elon College; student, University of Pittsburg; student, University of North Carolina.





WARNER S. ALEXANDER

College Pastor; Professor of Bible and Religious Education

A.B., Union Christian College; D.D., Union Christian College; vice-president of Union Christian College; superintendent of missions in Wyoming, '16-'20; graduate student of University of Chicago.



ROSS ENSMINGER

Professor of Religious Education

A.B., Carleton College; B.D., Union Theological Seminary; Yale Divinity School.



LILA NEWMAN

Instructor of Fine Arts

Ph.B., Elon College; graduate student, Columbia University.



C. JAMES VELIE

Director of Music

Northwestern University; teacher's certificate, Chicago Musical College; B.M., Palmer College; A.B., Elon College; private study in New York City and Chicago with Franklin Cannon, Howard Wells, Rudolph Reuter, Joseph Lhvyans, Rudolph Ganz.



ZENITH HURST VELIE

Piano and Voice

B.M., Palmer College; special normal work with Julia Lois Curruthers and Gertrude Kinssella; pupil of Raymond Wilson, Eastman School of Music; Northwestern University; Syracuse University.



MARY ANN BENN

Public School Music and Voice

B.A., Chicora College; student of Columbia University.



G. D. COLCLOUGH

Assistant Business Manager

A.B., Elon College; graduate student, University of North Carolina.



MRS. FRANCES J. RING

Superintendent of Grounds



E. F. RHODES

Violin and Band Instruments

Graduate, Shenandoah Conservatory of Music.



MRS. ALICE CORBOY

Matron, Ladies' Hall



MRS. C. C. JOHNSON

Assistant Librarian

Ph.B., Elon College; graduate student of Columbia University.



MISS ANN WATSON

Matron of Girls' Dormitory





Book Two

The Classes

Senior





PRESIDENTS

RALPH COGGINS
Freshman

DACE W. JONES
Sophomore

R. E. SIMS, JR.
Junior

W. P. LAWRENCE, JR.
Senior

History of Class of 1929

VOLUME I

On September 1, 1925, the largest and best prepared class ever to enter the halls of learning at Elon College matriculated as freshmen. We were determined to make the figure so dear to us—'29—shine on more places than the water tank. After paying our radiator fees to various sophomores, barking at the tank, running errands, such as to Dr. Amick's home late at night for "pivot oil" and the Maroon and Gold "staff" and to Coach Corboy's home for the "scrimmage line," we settled down to business.

For our president we selected Ralph Coggins, a very able and efficient man.

In athletics, the class of '29 was especially outstanding. A large part of the basketball team, baseball and football team came from our number. In the inter-class basketball tournament all three upper classes were swept from their feet, and we ran away with the championship.

VOLUME II

Early in September, 1926, we came back, a little less in numbers, but undaunted in spirit. "Red" Jones was elected as pilot to guide our destinies for another year. The majority of us were now outstanding members in literary and social organizations. Two-thirds of the total football scores were made by '29. Again we stalked off winners of the inter-class basketball tournament, having won eight out of nine games played.

VOLUME III

With "Squire" Sims as leader in our Junior year, we made great progress. We had begun to learn what college life was like—we knew it was work. And, too, we no longer poured copious tears over letters from an old sweetheart back home, or wept bitterly when we heard the strains of "Home, Sweet Home." We ordered our rings and settled down to the grand and glorious thoughts of being dignified Seniors.

VOLUME IV

The realization of a long dream has come to pass. Seniors, with Phalti Lawrence holding the scepter, and guiding our destinies toward the last coveted goal—diplomas. We were formally entertained by the Juniors. For a day we threw away our robes of dignity and seniority, and became sophomores again; of course, we spanked all the freshmen. In May we presented the results of many weary hours of labor, in the form of thesis, to the faculty. It was a great relief to us when they were accepted. May 19 we entered the class rooms to begin the final grind. We were taking our last examinations!

May 27, 1928. It is a date to be long remembered. With our diplomas in our hands we now stand face to face with the world. Upward and onward is our infinite goal. Our Alma Mater has cared for us in many trials and tribulations. Now it is our aim to go out into the world and reflect credit on her. Elon College, the class of '29 leaves you but loves you still.

CLASS HISTORIAN.

Senior Class Poem

When we were "freshies" we bid Elon to try us;
 We answered every challenge to our will;
 And though the silent mountains should defy us,
 We tried to make them subject to our skill.
 We kept our dreams and followed where they led us;
 We took life as a jest, decided laughter was best.

When we were "sophs" we asked no odds of distance,
 We learned to work and walk in honor's ways;
 We went to meet and master strong resistance,
 We could settle every problem which the mind of man could raise.
 We tried to bear our burden gallantly, and ever
 We sought the task which called for full endeavor.

Now we're Juniors with no thought of failure lurking
 Beyond tomorrow's dawn to fright our soul;
 Let failure strike—it still will find us working
 With faith that we shall next year reach our goal.
 We're being helpful to all who need us, winning what joys we can,
 Writing in triumph to the end our record as a man.

While we are Seniors, with its thrilling urge:
 We'll seek the best, strive to stand the test;
 Pressing onward, head high, and eager surge;
 Never old, never weak, never cheated;
 They shall name us not with the defeated—
 The Spirit of Elon and '20!

CLASS POET.



Senior Class

DR. J. U. NEWMAN, *Sponsor*

Colors: Brown and Gold

Flower: Brown-eyed Susa

Motto: "Not at the top but still climbing"

OFFICERS

WALTER PHALTI LAWRENCE, JR.	President
HAROLD GEORGE ROBERTSON	Vice-President
BIRDIE MARY ROWLAND	Secretary
CLARA WINSTON UNDERWOOD	Treasurer
FERN LASLEY	Poet
ROMIE GEORGE DAVIS	Historian



Senior Class

TWIMAN GLENN ANDREWS
SILER CITY, N. C.

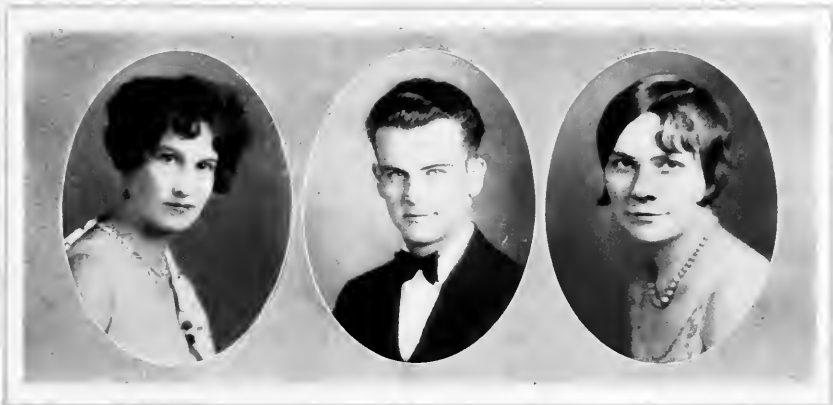
A.B.; Philologist Entertainment, '28; Football Squad, '29; Alpha Pi Delta.

ORA VIOLA BRADY
BENNETT, N. C.

A.B.

LUCY IONE BOONE
BURLINGTON, N. C.

A.B.; Glee Club, '26, '27, '28; Alamance Club, '25, '26, '27, '28; Choral Society, '27, '28; Diploma in Voice, '28; Pi Kappa Tau.



Senior Class

FLORENCE ELLEN BROWN
ELON COLLEGE, N. C.

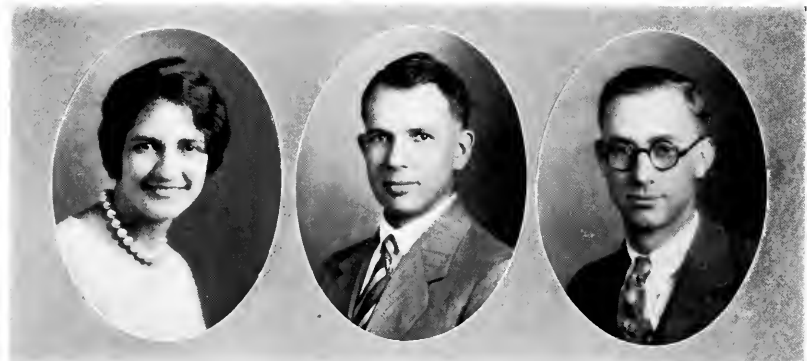
A.B.; Vice-President of Junior Class; Pi
Kappa Tau.

MARY EMMA BRANNOCK
ELON COLLEGE, N. C.

A.B.; Circulating Manager of "Maroon and
Gold"; Beta Omicron Beta.

JAMES BRADFORD BROWN
ELON COLLEGE, N. C.

A.B.; Baseball Squad, '27; Alpha Pi Delta.



Senior Class

MARGARET JEANNETTE BRUTON
MANN'S HARBOR, N. C.

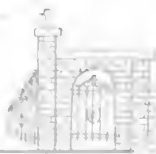
A.B.; Psihelian; Alamanca Club, '25, '26,
'27; Tau Zeta Phi.

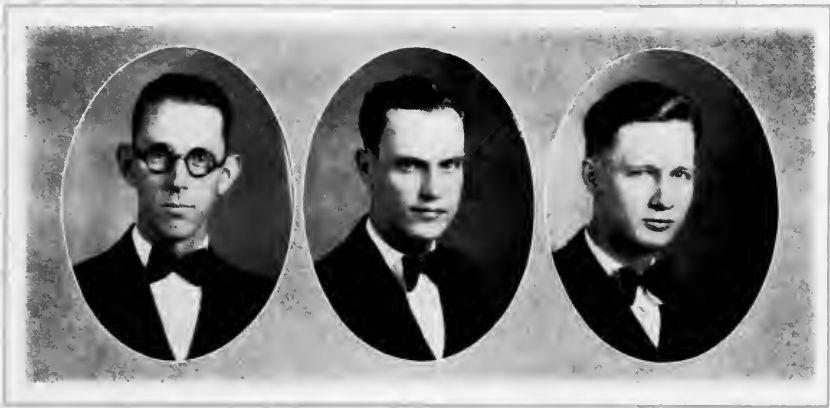
CARL HOMER CLAPP
BURLINGTON, N. C.

A.B.

L. RUSSELL CATHER
WINCHESTER, VA.

A.B.; Philologist; Freshman-Sophomore De-
bater, '18; President of Y. M. C. A., '19;
Football, '19.





Senior Class

CECIL A. COX
RAMSEUR, N. C.

A.B.; Philologist; Philologist Entertainment, '26; Chief Marshal, Philologist Entertainment, '27; "Maroon and Gold" Staff, '27, '28; Phipps Staff, '28-'29; Vice-President of Y. M. C. A.; Track Team, '26-'27; Class Basketball, '27-'28; Varsity Baseball, '27-'28; Church Usher, '28-'29; Alpha Pi Delta.

OLLIE WADE DEATON
BISCOE, N. C.

A.B.; Clio; Marshal Clio Entertainment; Track, '26-'27; Baseball Squad, '26-'27; Football Squad, '27; Alpha Pi Delta.

ROMIE GEORGE DAVIS
STEEDES, N. C.

A.B.; Clio; Clio Marshal, '26; College Usher, '26-'27; Reporters Club, '27, '28, '29; Student Senate, '28-'29; Vice-President of Pan-Hellenic Council, '28-'29; Class Historian, '28-'29; Vice-President of Religious Activities Organization, '28-'29; Alpha Pi Delta.



Senior Class

H. T. EFIRD
ALBEMARLE, N. C.

A.B.; Philologist; President of Economics Club; Chief Marshal at Freshman-Sophomore Debate; Editor-in-Chief of "Phippsicl"; E Men's Club; Football, '25, '26, '27, '28; Basketball, '26; Certificate in Physical Education; Iota Tau Kappa.

J. L. FOSTER, JR.
ELON COLLEGE, N. C.

A.B.; Pan-Hellenic Representative, '26-'27; "Maroon and Gold" Staff, '25-'26; Football, '24, '25, '26, '27; Varsity Basketball, '24; Class Basketball, '25, '26, '27; Baseball, '25.

RUTH FLOYD
CHIPLEY, GA.

A.B.; Secretary of Class, '25-'26; Bethlehem College; Secretary of Glee Club, '26-'27; Bethlehem College.



Senior Class

MADGE COLE GREEN
ELON COLLEGE, N. C.

A.B.; Pi Kappa Tau.

ETTIE HARVEY
LYNCHBURG, VA.

A.B.; Pi Kappa Tau.

ROBERT RAYMOND HARDY
2109 Avenue F.
ENSLEY, ALA.

A.B.; E Men's Club; Captain of Football
Team, '29; Football, '28-'29.



Senior Class

MARGARET CHRISTINE HORNADAY
ELON COLLEGE, N. C.

A.B.; Psihelian; Psihelian Entertainment,
'27; Commencement Essayist, '28; Tau Zeta
Phi.

MARGARET SUE JOHNSTON
ELON COLLEGE, N. C.

A.B.; Certificate in Religious Education; Di-
ploma in Religious Education; Certificate in
Stenography; Typist for "Phippsli".

RUBY INEZ HUFFINES
GIBSONVILLE, N. C.

A.B.; Marshal at Student Recital, '26; Tau
Zeta Phi.



Senior Class

DACE W. JONES
BURLINGTON, N. C.

A.B.; President of Sophomore Class; Captain of Football Team, '27; Played, '25, '26; Tennis Team, '25, '26, '27; Iota Tau Kappa.

CLAUDE WHITE KIPKA
MOORESVILLE, N. C.

A.B.; Vice-President, '25; Student Senate, '26-'27; Managing Editor of "Maroon and Gold", '28; President of Pan-Hellenic Council, '28; Editor of "Maroon and Gold", '29; Iota Tau Kappa.

ANNIE MILDRED JOHNSON
LUMBER BRIDGE, S. C.

A.B.; Psihelian; Psihelian Essayist Contest, '28; Psihelian Entertainment, '28; Vice-President of Psihelian Society; Inter-Society Debate; Vice-President of Christian Endeavor; Chapel Monitor; Choral Club; Humorous Editor of "Phipsieli" Staff; Tau Zeta Phi.



Senior Class

EVELYN FERN LASLEY
BURLINGTON, N. C.

A.B.; Class Poet, '26, '27, '28; Delta Upsilon
Kappa.

MARGARET N. LAWRENCE
4898 Fort Avenue
LYNCHBURG, VA.

A.B.; Associate Editor of "Phippsli"; Pi
Kappa Tau.

WALTER PHALTI LAWRENCE, JR.
ELON COLLEGE, N. C.

A.B.; Philologist; Philologist Commence-
ment Orator, '28; Philologist/Inter-Society
Debate, '28; Philologist Annual Entertain-
ment, '28; Class Historian, '26, '27, '28; Class
President, '29; President of Christian En-
deavor, '29; President of Pan-Hellenic Coun-
cil, '29; Advertising Manager of "Maroon
and Gold", '28; Assistant Business/Manager
of "Phippsli"; Kappa Psi Nu.





Senior Class

ALLEN WILSON LAXTON
COLLETTSVILLE, N. C.

A.B.; Clio; Clio Entertainment, '28; Glee Club, '28-'29; College Quartet, '29; Choral Club, '28-'29; College Choir, '28-'29; Orchestra, '28-'29; Band, '29; Alpha Pi Delta.

SILAS E. MADREN
ELON COLLEGE, N. C.

A.B.; Philologist; Alamance Club; Ministerial Association.

EDITH MARGARET LOCKEY
NEWPORT, N. C.

A.B.; Psiphelian Society; Treasurer of Psiphelian Society; Choral Member, '26, '27, '28, '29; Member of Music Lovers Club, '29; Diploma in Piano, '29.





Senior Class

HATTIE MCKINNEY
ELON COLLEGE, N. C.

A.B.; Certificate in Religious Education; Diploma in Religious Education; Certificate in Stenography.

MARIAN DONNELL NALLE
SANFORD, N. C.

A.B.; President of Student Council; Junior Student Council Representative; Choral Club, '26-'27; Secretary of Sophomore Class; Class Favorite, '28; Beta Omicron Beta.

MARION ARNOLD NETHERY
BROWN SUMMIT, N. C.

A.B.; Philologist; Philologist Entertainment, '27; President of Junior Boys' Sunday School Class, '27-'28; Alpha Pi Delta.





Senior Class

DAN LONG NEWMAN
ELON COLLEGE, N. C.

A.B.; Vice-President of Christian Endeavor; Vice-President of Sophomore and Junior Class; Alamance Club; E Men's Club; Basketball, '25, '26, '27, '28; Football, '25, '26, '27, '28; Iota Tau Kappa.

ELBERT FRANKLIN RHODES
DAYTON, VA.

A.B.; Philologist; Philologist Entertainment, '28; Glee Club, '27-'28; College Choir, '27-'28; Choral Club, '27-'28; Director of Band and Orchestra; Virginia Club; Kappa Psi Nu.

ELI TROY REGAN
LUMBERTON, N. C.

A.B.; Rankin-Wilson Literary Society; Director of Gym; Captain of Basketball Team, '26-'27.



Senior Class

G. EVERETTE RING
EDINBURG, VA.

A.B.; Clio; Clio Entertainment, '26-'27; Church Usher, '26, '27, '28; Virginia Club; Class Treasurer, '27; Class Basketball, '26, '27, '28; Student Manager of Athletics, '28-'29; "E" Men's Club, '28-'29; Business Manager of "Maroon and Gold", '28; Business Manager of 1929 "Phippsiel"; Iota Tau Kappa.

HAROLD GEORGE ROBERTSON
24 Merimo Avenue
MANTON, R. I.

A.B.; Clio; Clio Entertainment; Class Debater, '27; Intercollegiate Debater, '28; Yankee Club; Ministerial Association; Kappa Psi Nu.

MARGARET CHARLOTTE ROBERTS
WINDSOR, VA.

A.B.; Psykaleon; Society Chaplain, '26; Assistant Secretary of Society, '27; Treasurer of Society, '28; Psykaleon Entertainment, '27-'28; President of Psykaleon Society, '28; Essayist Contest, '26; Choral Club, '26, '27, '28; Virginia Club, '26, '27, '28, '29; Senior Representative of Student Council; Beta Omicron /Beta.





Senior Class

BIRDIE MARY ROWLAND
GREENSBORO, N. C.

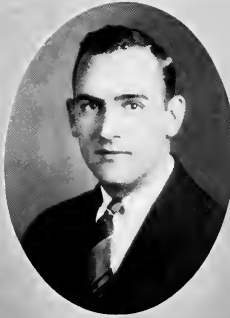
A.B.; Psiphelian; Psiphelian Debater, '28-'29; Class Secretary, '27-'28, '28-'29; President of Religious Activities Organization, '28-'29; Student Council, '25-'26; Y. W. C. A. Cabinet, '27-'28; Pan-Hellenic Representative, '28-'29; Secretary-Treasurer Pan-Hellenic, '28-'29; Social Editor of "Phippsicli", '28-'29; Delta Upsilon Kappa.

LENA RUSSELL

A.B.; Psiphelian; Secretary of Psiphelian Essayist Contest; Randolph Club; Economics Club; Chapel Monitor; Pi Kappa Tau.

THOMAS ROBERT RUSTIN
DOVER, DEL.

A.B.; Society Entertainments; Church Choir; Choral Club; Quartet; Orchestra; Band; Certificate in Physical Training; Expression Department Plays; Gym Team; Track Team.



Senior Class

DAVID SHEPHERD
ELON COLLEGE, N. C.

A.B.; Philologist; Philologist Commencement Orator; President of Y. M. C. A., '29; President of Student Council, '29; Intercollegiate Debater, '28; Varsity Baseball, '26, '27, '28, '29; Alpha Pi Delta.

HURLEY SIDNEY SHEPHERD
ELON COLLEGE, N. C.

A.B.; Philologist; Philologist Entertainment, '27, '28, '29; Superintendent of Sunday School, '28-'29; "Maroon and Gold" Staff, '28-'29; "Phipsili" Staff, '29; Varsity Baseball, '26-'27; Alpha Pi Delta.

R. E. SIMS, JR.
1117 Summit Ave.
GREENSBORO, N. C.

A.B.; President of Junior Class; President of "E" Men's Club, '29; "E" Men's Club; Vice-President of Economics Club; Pan-Hellenic Council; Athletic Council, '26; Football Squad, '28; Basketball, '27, '28, '29; Captain of Basketball Team, '28; Varsity Baseball, '26, '27, '28, '29; Captain of Baseball Team, '29; Iota Tau Kappa.



Senior Class

ELWOOD MCCARLEY SMITH
BROWN SUMMIT, N. C.

A.B.; Philologist; Baseball Team, '25-'26;
Football Team, '25-'26.

ABRAM CLEMENTS STEPHENSON
SEVERN, N. C.

A.B.; Sigma Phi Beta.

GLADYS IRENE SPOON
ELON COLLEGE, N. C.

A.B.; Psihelia; Psihelia Essayist Con-
test, '28; Marshal Psihelia Entertainment,
'28; Alumnae Club, '26, '27, '28; Tau Zeta
Phi.



Senior Class

C. P. THOMPSON
GRAHAM, N. C.

A.B.; Philologist; Philologist Entertainment, '27; Student Senate, '25-'26, '28-'29; Commencement Marshal, '28; Church Usher, '28-'29; Circulation Manager of "Maroon and Gold", '27-'28; Basketball Squad, '25; Track Team, '25-'26; Kappa Psi Nu.

CLIFTON J. THOMAS
ASHEBORO, N. C.

A.B.; Olio; Student Senate, '27-'28; Vice-President of Student Senate, '28-'29; Student Manager of Baseball, '28-'29; Iota Tau Kappa.

EVA MAE SYKES
KINSTON, N. C.

A.B.; Psiphelian; Psiphelian Entertainment, '27; Psiphelian Debater, '28; Life Recruit Band; Secretary and Treasurer of Life Recruit Band, '27; President of Life Recruit Band, '28-'29; Student Volunteer Delegate to Duke, '27; Member of Y. W. C. A. Cabinet, '27; Secretary to Student Council, '28-'29; Member of R. O. Cabinet, '28; Member of "Maroon and Gold" Staff, '28.



Senior Class

JEWEL VESTER TRUITT

GLEN RAVEN, N. C.

A.B.; Psiphelian; Psiphelian Commencement Essayist, '28; Psiphelian Entertainment, '27-'28; President of Life Recruit Band, '28; Vice-President of Y. W. C. A., '28; President of Y. W. C. A., '29; Y. W. C. A. Delegate to Blue Ridge Conference, '27; Delegate to Student Volunteer Conference at Detroit, '28; Secretary of College Sunday School, '28; Social Editor of "Maroon and Gold", '28-'29; Religious Editor of "Phipps", '29.

CLARA WINSTON UNDERWOOD

YOUNGVILLE, N. C.

A.B.; Psykaleon; Psykaleon Entertainment; Psykaleon Essayist Representative; Chief Marshal at Entertainment; Treasurer of Senior Class; College Choir, '25, '26, '27, '28, '29; Delta Upsilon Kappa.

GARDNER D. UNDERHILL

ALBANY, N. Y.

A.B.; Clio; Clio Entertainment, '27; Marshal Clio Entertainment, '28; Clio Commencement Orator, '28; Clio Oratorical Medal, '28; Clio Inter-Society Debater; President of Sunday School Class, '26-'27; Choral Club, '26, '27, '28, '29; Choir, '26, '27, '28, '29; Glee Club, '28-'29.



Senior Class

JOHN WILLIAM VANHOOK
ROXBORO, N. C.

A.B.; Philologist; Philologist Entertainment, '25-'27; Secretary of Sunday School Class, '25-'27; Commencement Marshal, '25; Economics Club, '28-'29; Spanish Club, '29; Athletic Committee, '25; Iota Tau Kappa.

CHARLES A. WALKER, JR.
BURLINGTON, N. C.

A.B.; Philologist, '24-'26; Member of Board of Directors of Economics Club; Athletic Editor of "Phippsli", '29; Football Squad, '24-'25.

RUTH DANIEL WICKER
GRAHAM, N. C.

A.B.; Student at N. C. C. W., '26-'27; Certificate in Organ; Psykaleon.



Senior Class

GLENN FARRELL WOMBLE
MONCURE, N. C.

A.B.; President of Sunday School Class, '27;
Choral Club, '28-'29; Glee Club, '27-'28;
Certificate in Chemistry; Certificate in Physical
Training; Boosters Club and Gym Team,
'26-'27; Assistant Circulation Manager of
"Maroon and Gold", '27-'28; Tennis, '26-'27;
Track, '27; Kappa Psi Nu.

PHYSICLI



PHYSICI



Jovioes



Junior Class

MISS LILA NEWMAN, *Sponsor*

Colors: Purple and Gold

Flower: Yellow Rose

Motto: "Build for character, not for fame."

OFFICERS

R. C. WIGHTMAN, JR.	<i>President</i>
ELLA MARIE KEYSER	<i>Vice-President</i>
VIRGINIA BROWN	<i>Secretary</i>
SIDNEY F. JACKSON	<i>Treasurer</i>



Junior Class

RUTH IRENE ALEXANDER
ELON COLLEGE, N. C.
Beta Omicron Beta; Psykaleon.

DORIS VIRGINIA APPLE
BURLINGTON, N. C.

DAVID PALMER BARRETT, JR.
PONCE, PORTO RICO
Kappa Psi Nu; Philologian.

ROBERT W. BOYD
HENDERSON, N. C.
Sigma Phi Beta; Clio.

C. V. BRIGGS, JR.
GREENSBORO, N. C.
Iota Tau Kappa.

E. E. BLACK
BURLINGTON, N. C.

VIRGINIA MAE BROWN
HEMP, N. C.
Beta Omicron Beta.

FRED S. CADDELL
ELON COLLEGE, N. C.
Iota Tau Kappa.

PAUL CADDELL
ELON COLLEGE, N. C.
Iota Tau Kappa.

MERRILL LOUISE CAVINESS
PORTSMOUTH, VA.
Psykaleon.

JOHN CARROLL CLARK
SNOW CAMP, N. C.
Iota Tau Kappa; Philologian.





Junior Class

WILLIAM HALE DUNCAN
SILVER CITY, N. C.
Philologist.

DELOS M. ELDER
BURLINGTON, N. C.
Clio.

T. D. EURE
GATESVILLE, N. C.
Iota Tau Kappa; Clio.

WILLIAM H. ELLIS
1640 PIKE AVE.,
BIRMINGHAM, ALA.
Iota Tau Kappa.

CLYDE C. FOUSHEE
SANFORD, N. C.
Alpha Pi Delta; Clio.

ROY M. GREEN
BROWN SUMMIT, N. C.
Kappa Psi Nu.

MARGARET CLARICE GUNN
REIDSVILLE, N. C.
Psykaeon.

ELIZABETH HARDEN
GRAHAM, N. C.

W. R. HINTON, JR.
ELON COLLEGE, N. C.
Sigma Phi Beta.

ANNIE LAURIE HOLLAND
SUFFOLK, VA.
Delta Upsilon Kappa.

MARY HORNE
BURLINGTON, N. C.
Pi Kappa Tau.



Junior Class

SIDNEY F. JACKSON
WASHINGTON, N. C.
Sigma Phi Beta.

G. D. KELLY
DURHAM, N. C.
Iota Tau Kappa.

ELLA MARIE KEYSER
ELON COLLEGE, N. C.
Pi Kappa Tau; Psihelian.

ALMA EATON KIMBALL
MANSON, N. C.
Delta Upsilon Kappa; Psykaleon.

EDWARD EUGENE KIPKA
MOORESVILLE, N. C.
Iota Tau Kappa; Philologist.

EUODIAS F. KNIGHT
STOKESDALE, N. C.
Alpha Pi Delta; Philologist.

WAUTEL GRACE LAMBETH
ELON COLLEGE, N. C.
Delta Upsilon Kappa; Psykaleon.

ALTON PARKER LEWIS
ALTMAHAW, N. C.
Alpha Pi Delta; Philologist.

THOMAS E. LOWERY
PEACHLAND, N. C.
Kappa Psi Nu; Philologist.

PAUL REED MAGEE
NEW HAMPTON, MO.
Alpha Pi Delta.

EDWIN ALBRIGHT MCPHERSON
BURLINGTON, N. C.
Iota Tau Kappa.





Junior Class

EVA ADDIE PARKER
CORAPEAKE, N. C.
Tau Zeta Phi.

MARGARET CURTIS REITZEL
LIBERTY, N. C.

EMMA ALBERTA ROBERTS
WINDSOR, VA.
Beta Omicron Beta; Psykaleon.

WORTH LANE THOMPSON
GRAHAM, N. C.

MARY LILLIAN UNDERWOOD
YOUNGSVILLE, N. C.
Delta Upsilon Kappa.

NELLIE M. WHITE
ELON COLLEGE, N. C.
Beta Omicron Beta; Psihelian.

WILLIE BELLE WICKER
SANFORD, N. C.
Delta Upsilon Kappa.

CHRISTINE WICKER
SANFORD, N. C.
Delta Upsilon Kappa.

ROBERT CAMERON WIGHTMAN
EDINBURG, VA.
Iota Tau Kappa.

LEVI PEEL WILKINS
BURLINGTON, N. C.
Iota Tau Kappa.

GUY AYTCH YORK
STALEY, N. C.
Alpha Pi Delta; Philologist.







Sophomore Class

DR. N. F. BRANNOCK, *Sponsor*

Colors: Blue and Gold

Flower: Red Rose

Motto: "To make the better best."

OFFICERS

L. C. WILLIAMS	<i>President</i>
WILLIAM LESTER REGISTER	<i>Vice-President</i>
VIOLA L. WORSLEY	<i>Secretary</i>
VIRGINIA HARDEN	<i>Treasurer</i>



Sophomore Class

BETTY JOE AMICK
LIBERTY, N. C.

WILLIAM THOMAS BEATY
MATTHEWS, N. C.
Iota Tau Kappa; Philologist.

JAMES EULON BRADY
ELON COLLEGE, N. C.

HOWARD BRIGGS
GREENSBORO, N. C.
Iota Tau Kappa.

ELIZABETH ANNIE CARPER
ROWLAND, N. C.
Psykaleon.

EDITH CLARK
CHARLOTTE, N. C.
Pshphelian.

LEO J. COLCLOUGH
MORRISVILLE, N. C.
Alpha Pi Delta; Clio.

VYZELLE DENSON
PORTSMOUTH, VA.

CLARICE DICKERSON
DUNN, N. C.
Psykaleon.

A. A. DOFFLEMYER
ELKTON, VA.
Kappa Psi Nu; Philologist.





Sophomore Class

K. B. DOFFLEMYER
ELKTON, VA.

LEONARD G. DOSTER
WAXHAW, N. C.
Kappa Psi Nu.

MOYD ALDRIDGE FITE
CHARLOTTE, N. C.
Psykaleon.

EUGENIA DARE GREEN
ELON COLLEGE, N. C.
Pi Kappa Tau.

EUGENIA CATHERINE GRUBB
GREENSBORO, N. C.

EDWIN GUNN
REIDSVILLE, N. C.
Alpha Pi Delta; Clio.

SADIE ENGELICA GUNTER
REIDSVILLE, N. C.
Psiphelian.

VIRGINIA HARDEN
ELON COLLEGE, N. C.
Beta Omicron Beta.

WYATT R. HIGHSMITH
GREENVILLE, N. C.
Clio.

EUGENIA GRAY HILLIARD
ELON COLLEGE, N. C.



Sophomore Class

H. C. HILLIARD
NORLINA, N. C.
Philologist.

M. T. HINSON
SANFORD, N. C.

K. B. HOOK
WINCHESTER, VA.
Alpha Pi Delta; Philologist.

MATTIE HUDSON
DUNN, N. C.

R. H. JOHNSON
DUNN, N. C.
Clio.

ANNIE IDELL JONES
SUNBURY, N. C.
Beta Omicron Beta; Psykaleon.

MARY RAWLS JONES
HOLLAND, VA.
Delta Upsilon Kappa.

MARGARET EMMA LINEBERGER
CHARLOTTE, N. C.
Tau Zeta Phi; Psiphelian.

MARY ERVIN LINEBERGER
CHARLOTTE, N. C.
Psiphelian.

PAUL LOESSI
DOVER, OHIO





Sophomore Class

D. B. LONG
GRAHAM, N. C.
Sigma Phi Beta.

JOHN LOWERY
PEACHLAND, N. C.
Kappa Psi Nu.

CLARA LOIS McADAMS
ELON COLLEGE, N. C.
Delta Upsilon Kappa.

LILLIAN McINTYRE
ALTAMAHAW, N. C.

BERYL McPHERSON
SNOW CAMP, N. C.

MARJORIE MOORE
DOVER, DEL.
Beta Omicron Beta.

T. E. MOSER
BURLINGTON, N. C.

VELMA REID O'CONNELL
JONESBORO, N. C.
Psihelian.

B. P. RAKESTRAW
WENTWORTH, N. C.
Clio.

ANN PRETLOW RAWLS
SUFFOLK, VA.
Delta Upsilon Kappa.



Sophomore Class

LESTER W. REGISTER
SANFORD, N. C.

Kappa Psi Nu; Philologist.

A. A. RODRIQUEZ
HAVANA, CUBA.

Kappa Psi Nu; Clio.

JOHN HINTON ROUNTREE
NORFOLK, VA.

Sigma Phi Beta.

GERTIE ALMA RUDD
BURLINGTON, N. C.

CLARA MABEL SHARP
ELON COLLEGE, N. C.
Delta Upsilon Kappa; Psykaleon.

JOHN HOWARD SMITH
NEWPORT NEWS, VA.
Clio.

LOUISE SPRINGS
CHARLOTTE, N. C.
Psiphelian.

A. M. STEPHENSON
SEVERN, N. C.
Sigma Phi Beta

ROBERT EUGENE TALLY
CARBONTON, N. C.

REBECCA MALVINA TAYLOR
AMANTHE, N. C.
Psykaleon.





Sophomore Class

EUGENE HERBERT THOMPSON
LIBERTY, N. C.

EDNA TYSON
BURLINGTON, N. C.

EDNA MARIE WARD
LIBERTY, N. C.
Psi-kaleon.

TRUMAN ELIS WARD
BURLINGTON, N. C.

SUE ELLA WATTS
PEACHLAND, N. C.
Beta Omicron Beta.

GLADYS IRENE WHITE
DANVILLE, VA.
Tau Zeta Phi; Psihelian.

SAM LOUIS WHITELEY
GREENSBORO, N. C.

DOROTHY VIRGINIA WILLIAMS
FRANKLIN, VA.
Beta Omicron Beta.

ESTELLE ERMA WILLIAMS
BAILEY, N. C.
Delta Upsilon Kappa; Psi-kaleon.

GRACE MARIE WRIGHT
ASHBORO, N. C.
Pi Kappa Tau.





"His Master's Voice"



Freshman Class

A. R. VANCLEAVE, *Sponsor*

Colors: Silver-Rose

Flower: American Beauty Rose

Motto: "Climb, though the Rocks be Rugged."

OFFICERS

FRED I. DICKERSON	<i>President</i>
URAL W. WATSON	<i>Vice-President</i>
MABEL BARRETT	<i>Secretary</i>
FRANCES RING	<i>Treasurer</i>



Freshman Class

FRANCIS IRENE ALDRIDGE
UNION RIDGE, N. C.

ALBERTA FRANCENA AUMAN
SEAGROVE, N. C.

MARY ELIZABETH BARNWELL
MEBANE, N. C.
Tau Zeta Phi.

MABEL BARRETT
PONCE, PORTO RICO.
Delta Upsilon Kappa.

RUTH ELIZABETH BATESON
SANFERNANDO, CAL.

LARUE VIRGINIA BRANN
BROWN SUMMIT, N. C.
Psihelian.

MARGARET LORENA BRIGGS
GREENSBORO, N. C.
Tau Zeta Phi; Psihelian.

ANNA VIRGINIA BRITT
HOLLAND, VA.
Psihaleon.

ADNA LANE BRUTON
WADEVILLE, N. C.
Psihaleon.

DICK CADDELL
ELON COLLEGE, N. C.

LEWIS CAGLE
ETHEL, N. C.
Clio.





Freshman Class

NORMAN HINTON CAMERON
JONESBORO, N. C.
Alpha Pi Delta.

HORTENSE TARITHA CANTRELL
BURLINGTON, N. C.

MABEL HUNTER COGHILL
HENDERSON, N. C.
Delta Upsilon Kappa; Psykaleon.

PETER DAVIS COGHILL
HENDERSON, N. C.

JAMES WILLIAM CORBETT
GRAHAM, N. C.
Kappa Psi Nu.

ALBERTA BREWER COVINGTON
EVERGREEN, N. C.

ALTA LOUISE DICK
GREENSBORO, N. C.
Pi Kappa Tau.

FRED IRVIN DICKERSON
REIDSVILLE, N. C.
Sigma Phi Beta; Clio.

EDGAR MCIVER DUNCAN
GREENSBORO, N. C.

SALLY CRYSTABELLE ELDER
BURLINGTON, N. C.
Beta Omicron Beta; Psykaleon.

HARRISON GOODMAN
BURLINGTON, N. C.



Freshman Class

MARTHA ELLEN GRAVES
SEAGROVE, N. C.

VADA WINDALEME GRAVES
SEAGROVE, N. C.

MELBA GROGAN
REIDSVILLE, N. C.
Psiphelian.

GEORGE BRANT HACKETT
GREENSBORO, N. C.

HAROLD WALDO HARTLEY
HOMESTEAD, PA.
Sigma Phi Beta.

BEULAH HENSLEY
BURLINGTON, N. C.

MARY LOUISE HOUGH
HIGHLAND FALL, N. Y.

MARGARET WINEFRED HOYLE
NEWTON, N. C.

DOLPHINE ALEATHEA IRBY
ENFIELD, N. C.
Psiphelian.

CHARLES LEON JONES
BURLINGTON, N. C.
Sigma Phi Beta.

ELIJAH NEWMAN JONES
HOLLAND, VA.
Iota Tau Kappa; Clio.





Freshman Class

SARA KATE JONES
WADESBORO, N. C.

ELLIS HART JONES
WADESBORO, N. C.

CURVIE MAY KEITH
NORTHSIDE, N. C.

DENNIS F. KNIGHT
STOKESDALE, N. C.
Philologist.

WALTER C. LATHAM
BATH, N. C.
Sigma Phi Beta.

MAPLE SPENCER LAWRENCE
SEAGROVE, N. C.

CATHERINE ELIZABETH LEMMOND
SANFORD, N. C.
Psihelian.

WALTER GLENN LEWIS
ALTAMAHAW, N. C.
Alpha Pi Delta; Philologist.

RODMAN GRIZZARD LILLY
WAVERLY, VA.
Clio.

VIRGINIA HOWARD LINERBERGER
CHARLOTTE, N. C.

W. G. LOCKHART
ROCKY POINT, N. C.
Alpha Pi Delta; Clio.



Freshman Class

GARLAND OLANDER MANN
 HOLLY SPRINGS, N. C.
 Philologist.

JOHN WILLIAM MATLOCK
 ELON COLLEGE, N. C.

LOIS VERNELL MCFARLAND
 GREENSBORO, N. C.
 Beta Omicron Beta.

ROBERT MCLEOD
 BARTOW, FLA.

LANNIE DORIS MCINTYRE
 GREENSBORO, N. C.
 Psiphelian.

HENRY FRANK MITCHELL
 BURLINGTON, N. C.
 Sigma Phi Beta.

ROBERT WILSON MORPHIS
 REIDSVILLE, N. C.
 Sigma Phi Beta; Clio.

RICHARD KEATH MOORE
 BURLINGTON, N. C.

MARVIN LEWIS MOSELEY
 LA CROSS, VA.
 Kappa Psi Nu; Clio.

ODELL MOSER
 GRAHAM, N. C.

MYDE NEWSOME
 LA GRANGE, N. C.





Freshman Class

LELA MADELINE NICHOLSON
GRAHAM, N. C.
Psiphelian.

HELEN IOLA OLIVER
CEDAR GROVE, N. C.

ANNIE RUE PACE
SNOW CAMP, N. C.

LUCY MAE PAINTER
PROSPECT HILL, N. C.

J. RANKIN PARKS, JR.
GREENSBORO, N. C.
Kappa Psi Nu; Clío.

GERTRUDE ELIZABETH PASCHALL
RIDGEWAY, N. C.

GRACE WILKINS PASCHAL
ALTAMAHAW, N. C.

HUGH EDWIN PEOPLES
SILER CITY, N. C.

JEWELL MAE PRESNELL
HASEFORD, FLA.

EVELYN BYRD RICHARDSON
WAVERLY, VA.
Psykaleon.

ROY A. RICHARDSON
SUFFOLK, VA.
Kappa Psi Nu; Clío.



Freshman Class

FRANCES WILSON RING
EDINBURG, VA.

Delta Upsilon Kappa; Psykaleon.

MARY ANN RUDD
BROWN SUMMIT, N. C.

ELIZABETH BYRD SLACK
HEMP, N. C.

FRED A. SMITH
HILLSBORO, N. C.
Iota Tau Kappa; Philologist.

RUTH ROLAND SMITH
SILER CITY, N. C.

WM. GLADSTONE SMITH
BROWN SUMMIT, N. C.
Alpha Pi Delta; Philologist.

WAYNE BASIL SPOON
BURLINGTON, N. C.

LOUIS SKINNER STANFIELD
GREEDMOOR, N. C.

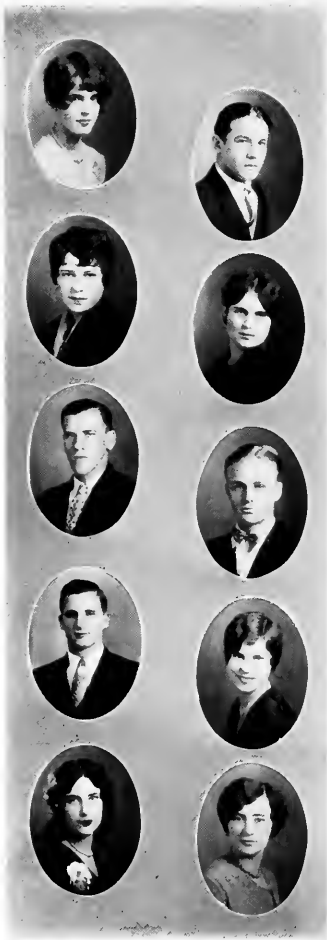
BAXTER FRANKLIN STOKES
DENTON, N. C.

NANNIE KATHLEEN STOUT
SANFORD, N. C.
Beta Omicron Beta.

ETHELZYNE E. STRICKLAND
WADE, N. C.



Freshman Class



BEULAH SUTTON
ALTMAHAW, N. C.

EDWIN WILSON THOMPSON
MILTON, N. C.
Clio.

ELIZABETH CORNELIA TROXLER
REIDSVILLE, N. C.
Psiphelian.

HELEN GERTRUDE TURNER
ROCKY MOUNT, N. C.
Tau Zeta Phi.

URAL WARREN WATSON
SULLIVAN, IND.
Alpha Pi Delta; Clio.

CECIL WATTS
PEACHLAND, N. C.
Kappa Psi Nu.

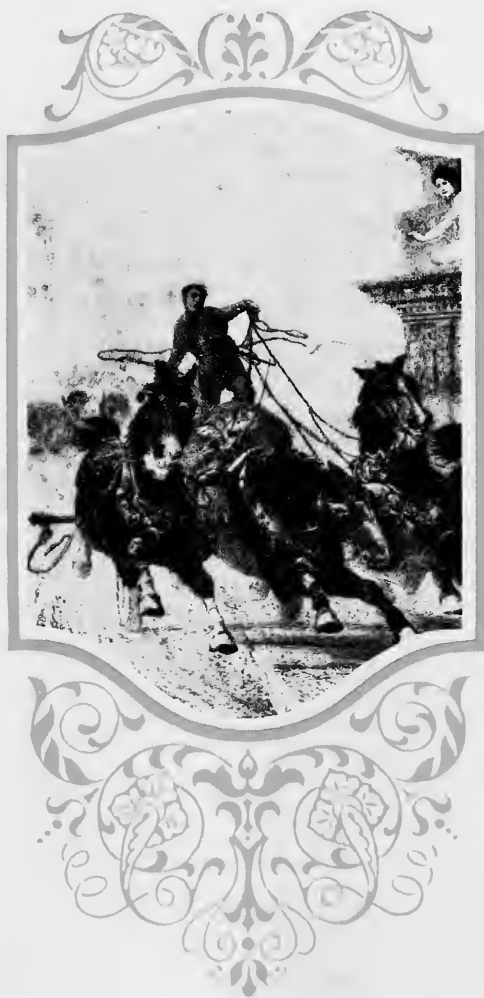
H. T. WILLIAMS
EAGLES SPRINGS, N. C.
Philologist.

EVELYN YATES
SUFFOLK, VA.
Beta Omicron Beta.

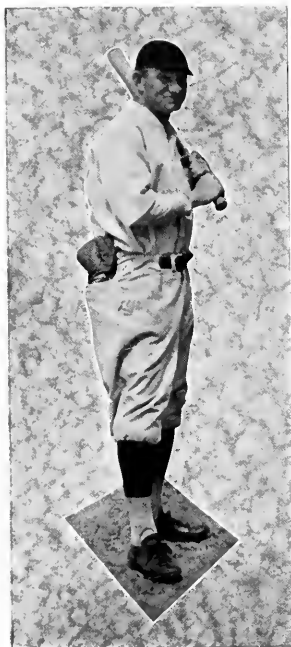
MARGARET ETHEL BROWN
BURLINGTON, N. C.

MARY AUMAN
SEAGROVE, N. C.





Book Three
Athletics

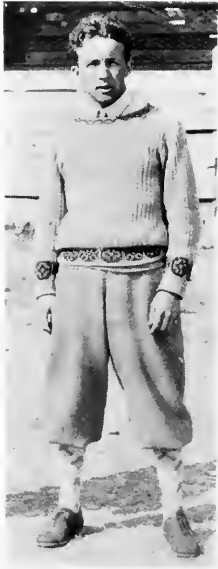


D. C. WALKER

Coach

Coach Walker has been with us for the past two seasons. During his stay he has become popular with the students and holds their respect and friendship.

His teams may not come out with the best record at the close of each season, but one can always count on seeing a good game and a well-coached team.



G. EVERETT RING

Student Manager of Athletics

"Crusty" has served in this capacity of Student Manager and has done his work well. His services have meant much to Coach Walker and the teams.

C. M. CANNON

Graduate Manager of Athletics

"C. M." has served in this role for the past three years. He is ever planning for good schedules and for the success of all the teams.

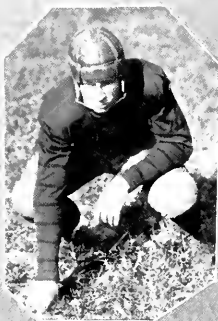


FOOTBALL



CAPTAIN R. R. HARDY
Center

Though handicapped by injuries a majority of the past season, Captain Hardy's generalship and fighting spirit have meant much to the team's success this year. He was ever a tower of strength in the line, being our pivot man. He has earned his spurs due to his hard work and his clean sportsmanship.



Football

DAN LONG NEWMAN—Halfback—"Hawkeye" could gain ground with the best of them and his left-handed passes were always a menace to our opponents.

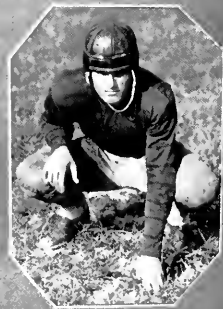
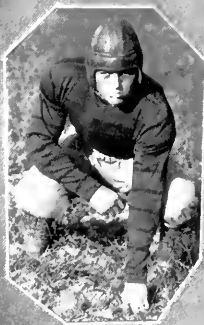
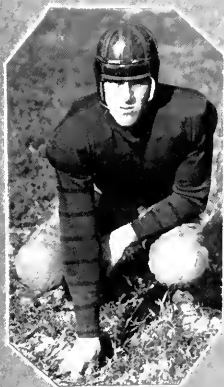
A. M. STEPHENSON—Guard—Although handicapped by injuries, "Spec" made his letter this fall. Big things are expected of "Spec" in his remaining years at Elon.

LOUIE P. ZEGLER—End—Too much can't be said for "Louie." His natural ability for snagging passes played an important part in the team's success for the past two seasons.

FRAN WATSON—Guard—Watson, who hails from the "Hoosier" State, was new to the game but his natural ability and fighting spirit helped him to make his letter.

L. C. MERRITT—Guard—"Sug" broke in this year at guard and played consistently and reliably. "Sug" has two more years of football and much is expected of him.

J. C. CLARK—End—"Cap" made good in his first attempt to play football this year. His defensive playing was outstanding.





ROWLAND SMITH—Captain—**Tackle**—Smith has been one of the most outstanding men in the line for the past two years. He also did the punting for the team this year. His ability as a leader will be a great asset to the team next year.

Z. T. WALKER, JR.—**quarterback**—“Ze” has run the team for the past two years and with good results. His ability to pass and to carry the ball has made him a valuable man.

WALTER LATHAM—**Halfback**—“Foggy” although playing his first year, by his line-plugging and his defensive work, has made himself an asset to the team.

E. T. REGAN—**Guard**—Although “Eli” failed to make his letter, his hard work and fighting spirit contributed much to the team’s success.

H. T. WILLIAMS—**Fullback**—“Hot” is one of the best line-pluggers to ever don a Christian uniform. He bucked up the line equally as well. Good luck “Hot”.

R. P. ROLLINS—**End**—“Country” made a good record this year. He is a real pass-catcher. We pride a future for him in football.

H. T. EHRD—**Tackle**—“Tim” has finished up four years of varsity football. He is a fine runner and hard worker. His shoes will be hard to fill next year.





FOOTBALL SQUAD

REVIEW OF THE SEASON

Elon's football season from a won and lost standpoint was not a success, but looking from another angle we consider it a success.

Playing games with much larger institutions under adverse conditions the record of the team is commendable.

Although the team was young and inexperienced almost to a man, they gave a good account of themselves in every game played.

After losing to N. C. State, Davidson and other like teams, the team staged a come-back when they journeyed to Florida, where they defeated the University of Miami at Coral Gables, 23-19. Then on Thanksgiving Day the Lenoir-Rhyne Mountain Bears were overwhelmed by the rejuvenated "Fighting Christians," 32-6.



BASKETBALL



CAPTAIN C. V. BRIGGS, JR.
Forward

Captain Briggs gave a good account of himself. The strong points of the Christian cage leader's game is his play under the basket, and many a missed goal by his mates has been converted into two points by effective use of his superior height. His ability to break into the opposition's offense and capture the ball time and again featured every battle he participated in. He likewise sank many goals into the hoops when they were most needed. He has one more year to perform on the floor at Elon.



Basketball

GEORGE D. KELLY

Guard

Kelly, small in stature, proved the spirit of the team. He was literally everywhere, mixing in every play, and his contribution toward advancing the ball cannot be over-estimated. As a shot, he proved to be only fair, but at critical moments he came through and saved several games.

R. E. "SQUIRE" SIMS, JR.

Center

"Squire" was a bright light on the quinter of last season. This veteran pivot man continued to shine this year despite an injured ankle which gave him trouble throughout the season. He is an accurate passer and one of the best floor workers on the squad.

ZAC T. WALKER

Forward

Zac was bowling along at a fast clip in his second season when overtaken by a wrenched knee that laid him low for the best part of the schedule. Zac is the most elusive man of the works, good dribbler, nice shot, and is great on the passing game. The niftiest passer and the best ball faker on the floor will be back next year.



PAUL CADDELL

Guard

"Pill" was one of these fellows that could be called upon at any time, to fill in anyone's place. He was a good shot. His best work was on the defensive end, always there breaking up shots when it seemed impossible.

NASH PARKER

Forward

Nash stepped in the breach left by the injuries of Walker and performed in veteran-like style. Nash dropped in shots from all angles of the court. He was in there fighting from the beginning until the end, always giving his best.

FRED CADDELL

Guard

Serving his first year on the varsity, Fred displayed all the earmarks of a first-class cage artist. Rather slow on his feet, he made up for this defect by possessing a keen eye for the basket. Fred is only a Junior and has another year, which should see him become a more valuable man of the Christian Five.



WALTER LATHAM

Forward

"Walt" looks like a million dollars on the court. And who knows what he would do with a little experience and a little less competition? At any rate "Walt" is in there mixing things up, and when called upon he is "ready."

U. W. WATSON

Guard

Although not a regular this year, Watson always proved a valuable substitute. He plays a neat floor game and puts up a good defensive game. He has three more years to perform for the Maroon and Gold five. With another year of experience, he will cause many opposing forwards much worry.

ROY ROLLINS

Forward

Playing his first year on the varsity, "Sleepy-Hollow" displayed promise of developing into one of the best basketeers. "Sleepy-Hollow" had an eagle eye for the basket, and, given a fraction of a second to set himself, could be depended upon to send the leather swishing through the hoops.





Freshman Basketball Team

J. STOKES	F. DICKERSON	H. DUNCAN	E. THOMPSON
C. ROBERTS	J. PARKER	H. PEOPLES	M. CAPO
F. SMITH	B. HACKETT	G. MANN	ELI REGAN, <i>Coach</i>
	B. STOKES	F. BROOKS	

1929 Schedule and Results

	<i>Opponents</i>	<i>Freshman</i>
Dec. 6—Elon High	18;	13
Dec. 8—Erwin High	13;	16
Dec. 11—Summer High	14;	24
Jan. 15—Sophomore Team	10;	19
Jan. 17—Junior Team	9;	29
Jan. 18—Senior Team	32;	23
Jan. 21—Burlington High	2;	17
Jan. 26—Sophomores	32;	24
Jan. 30—Juniors	24;	25
Jan. 31—Reidsville High	25;	21
Feb. 9—Gibsonville High	11;	22
Feb. 11—Gibsonville High	11;	27
Feb. 16—Gibsonville High	16;	23
Feb. 19—E. M. Holt High	19;	30
Feb. 26—Reidsville High	19;	29



VARSITY SQUAD

Basketball Schedule

ELON COLLEGE
SEASON, 1929

January 10—	ERSKINE	Elon
January 12—	GULFORD	Elon
January 14—	LENOIR-RHYNE	Elon
January 15—	EMORY AND HENRY	There
January 16—	V. P. I.	There
January 17—	V. M. I.	There
January 18—	BRIDGEWATER	There
January 26—	WAKE FOREST	There
January 29—	WOFFORD	There
January 30—	DAVIDSON	There
February 1—	DEFIANCE	Elon
February 2—	DEFIANCE	Elon
February 9—	CATAWBA	Elon
February 16—	HIGH POINT	There
February 19—	LENOIR-RHYNE	There
February 20—	CATAWBA	There
February 26—	HIGH POINT	Elon
February 28—	GULFORD	There

BASEBALL



CAPTAIN R. E. SIMS, JR.

Sims has played a big role in the many victories Elon's powerful team has chalked up during his four years on the team. He not only made good hits across the diamond and to the far corners of the lot, but he made a hit with his fellow students and team mates. He is a gentleman and a true sportsman.



Baseball

L. T. SMITH
Third Baseman

"Red" has been a great asset to the team. He hits well, leading the club in 1928. He also plays the third base position with marked ability. "Red" is only a Sophomore and much is expected from him for the remainder of his college career.

"ZEB" HARRINGTON

"Zeb" hails from Chatam County, that is known for its abundant supply of rabbits. "Zeb" plays short-stop with accuracy, hits well and runs the bases like a scared rabbit.

DAVID SHEPHERD

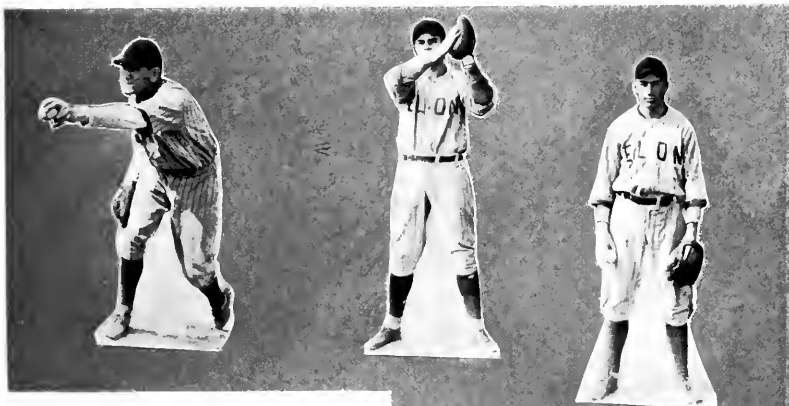
"Old Reliable" Dave finishes his college career this year. He will always be remembered for his steady and untiring efforts. As a catcher, Dave is there. His graduation will give some youth a high mark to try and fill his position.

HOWARD BRIGGS

Howard is the second baseman. Only a Sophomore, but a veteran at second. His field work is clever and he hits with regularity.

A. F. FOWLER, JR.

"Daddy Fowler" is one of our mainstays in the box. He has plenty on the ball and a good head to apply the psychology when needed.



"LEFTY" BRIGGS

"Lefty," the boy with a "Salary Arm." "Lefty" has been another one of our consistent pitchers. He has won his share of the games each year. It was at the end of his Sophomore year that our friend Charlie Carroll saw that Lefty had future baseball in him and signed him for the Green-boro Patriots Club. At the end of the season Carroll sold Lefty to the Detroit Americans. We are confident that Lefty will make "Bucky" Harris a good man. Luck to you, Briggs!

J. CARROLL CLARK

Better known as "Cap." "Cap" had a hard time of breaking into the line-up in his first year of college baseball, but once he got in there he was a regular. His hitting was outstanding. "Cap" has another year on the team and his presence will be felt by opposing pitchers as well as his team mates.

WOODLIEF, COX AND CORBITT

Although never having won a letter, these boys are not to be sneered at. Woodlief did his bit of relief in helping the condition of the batting strength. Cox pitched several collegiate games this year, did good relief work and has been a valuable man to have on the squad. Corbitt, general utility man, came to the rescue of the team in many games.



Baseball Schedule 1929

March 29—Catawba	There
April 1—High Point	Greensboro
April 4—Bridgewater	There
April 5—V. P. I.	There
April 6—Emory and Henry	There
April 10—Wake Forest	Elon
April 13—Wofford	Elon
April 18—Wake Forest	There
April 19—Lenoir-Rhyne	Elon
April 22—Davidson	There
April 23—Lenoir-Rhyne	There
April 24—Wofford	There
April 25—Erskine	There
April 27—Guilford	There
April 30—Catawba	Elon
May 4—Piedmont	Elon
May 10—Erskine	Elon
May 11—Guilford	Elon





BASEBALL SQUAD

BASEBALL

Elon has had a remarkable baseball team for the last several years. Last year was a bright spot in Elon's record, playing eighteen games and winning sixteen, being turned back by the Winston-Salem twins, winner of the Piedmont League, and by Wake Forest. Some of the big games marked on the winning card were the Greensboro Patriots, runner-up for the Piedmont. Others to fall before this fence busting aggregation were the University of Richmond, V. M. I., Pennsylvania State, Davidson and many other colleges.



E Men's Club

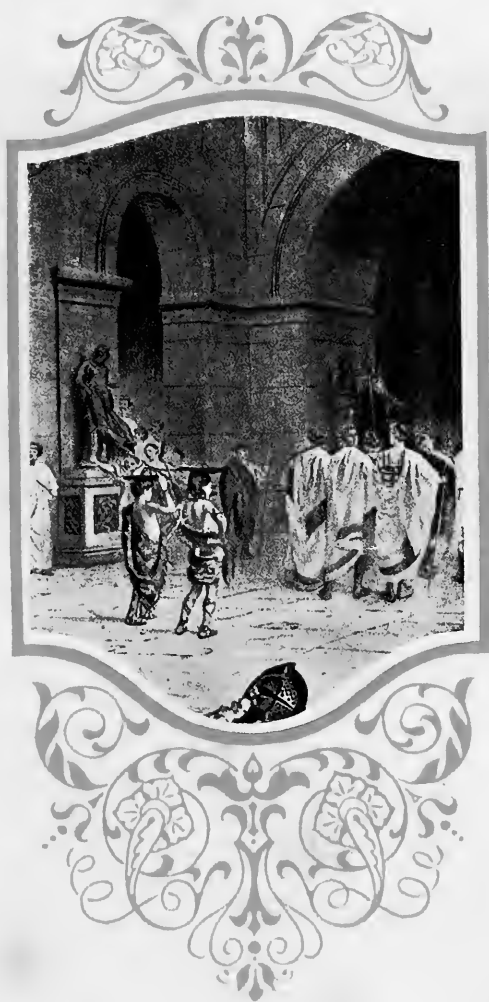
OFFICERS

R. E. SIMS, JR.	President
D. W. SHEPHERD	Vice-President
J. CARROLL CLARK	Secretary
ZEB HARRINGTON	Treasurer

MEMBERS

H. T. EFIRD	PAUL CADDELL	URAL WATSON
ROLAND SMITH	WALTER LATHAM	R. R. HARDY
LEFTY BRIGGS	DAN LONG NEWMAN	T. D. EURE
L. T. SMITH	J. L. FOSTER, JR.	FRED CADDELL
PETE WILLIAMS	ZAC WALKER	ROY ROLLINS
A. M. STEPHENSON	H. S. SHEPHERD	GEORGE KELLY
FOSTER HUGHES	HOWARD BRIGGS	R. H. JOHNSON
G. E. RING	LOUIE ZEIGLER	J. B. BROWN





Book Four
Features

Oh, My Love is Like a Red, Red Rose

*Oh, my love is like a red, red rose
That's newly sprung in June;
Oh, my love is like a melodie
That's sweetly play'd in tune.
As fair art thou, my bonnie lass,
So deep in love am I;
And I will love thee still, my dear,
Till a' the seas gang dry,
Till a' the seas gang dry, my dear,
And the rocks melt wi' the sun;
I will love thee still, my dear,
While the sands o' life shall run.
And fare thee weel, my only love,
And fare thee weel awhile,
And I will come again, my love,
Tho' it were ten thousand mile.*

BURNS



MISS LILLIAN UNDERWOOD, *Phipps' Sponsor*



MRS. G. M. KIPKA, *Sponsor of Maroon and Gold*



MISS MARY GRAHAM LAWRENCE, *Senior Class Sponsor*



MRS. R. C. WIGHTMAN, SR., *Junior Class Sponsor*



MISS HELEN HORNER, *Sophomore Class Sponsor*



MISS JUANITA MITCHELL, *Freshman Class Sponsor*



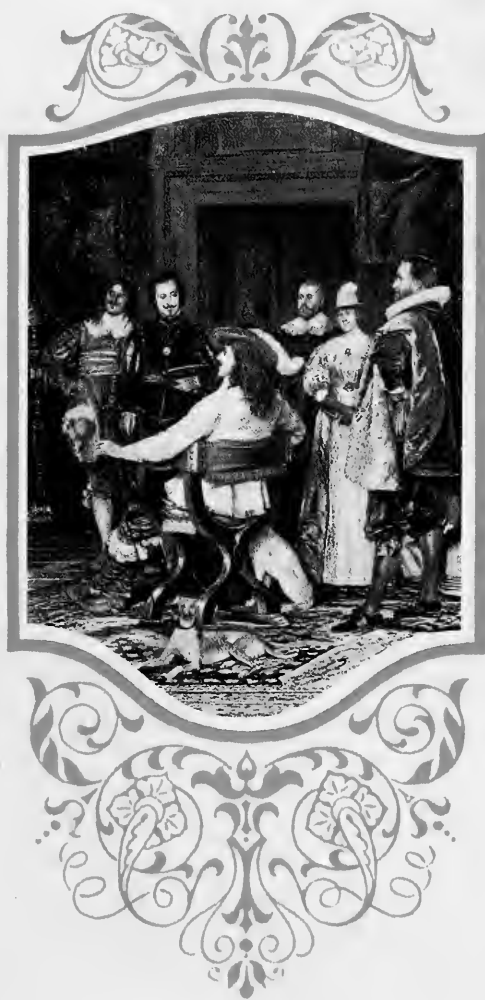
MISS MILDRED ARLEDGE, *Football Sponsor*



MRS. C. V. BRIGGS, SR., *Basketball Sponsor*

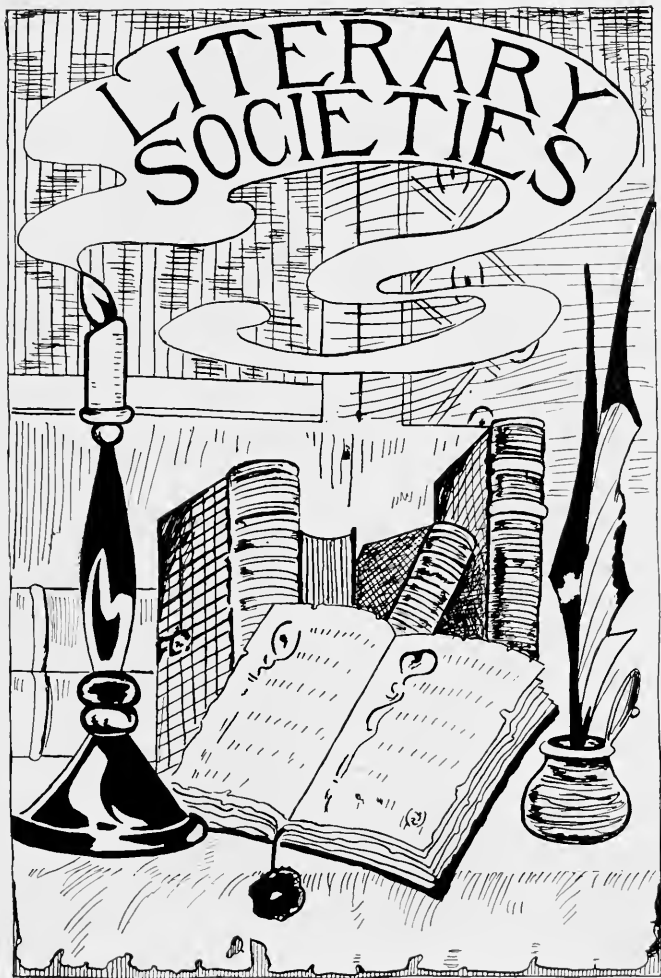


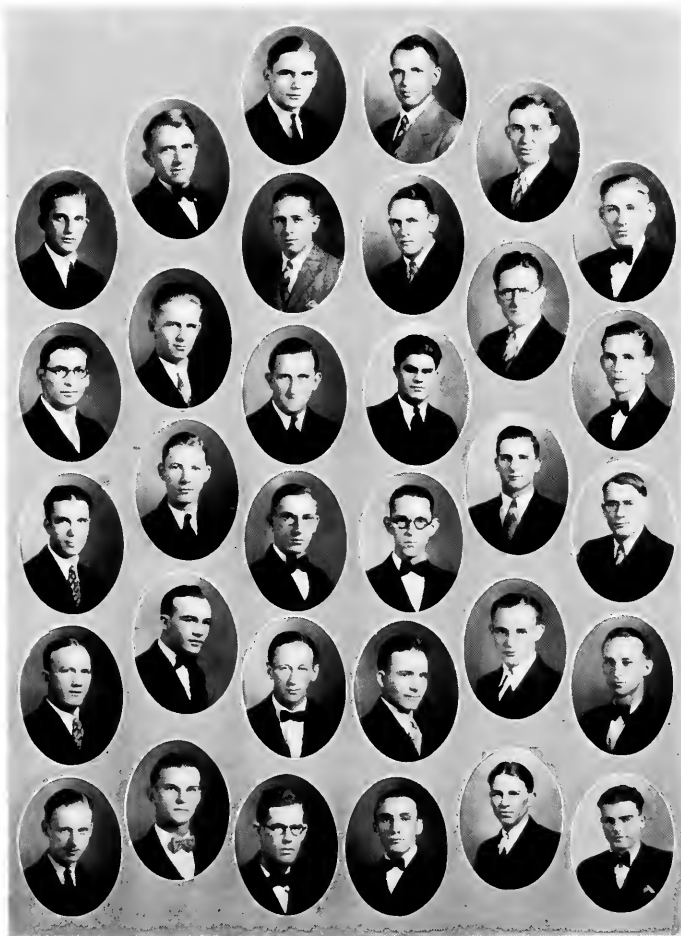
"BOBBY" LE ROY SADLER, *Baseball Sponsor*



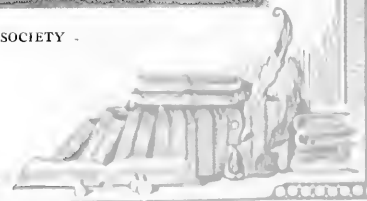
Book Five

Organizations





PHILOLOGIAN LITERARY SOCIETY

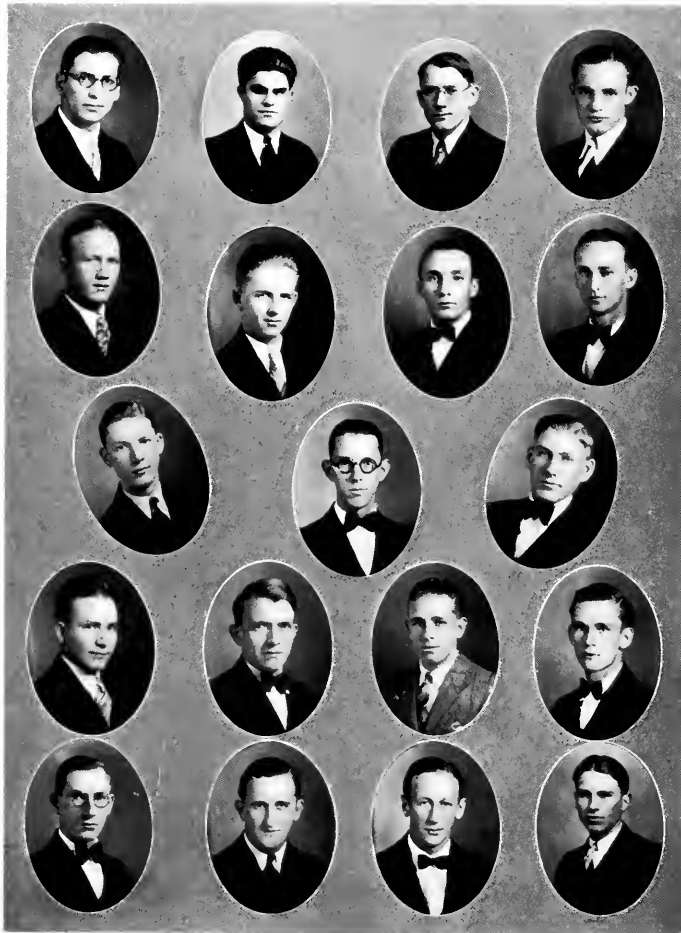




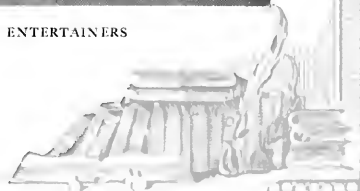
Philologian Roster

T. G. ANDREWS	W. H. DUNCAN
D. P. BARRETT	H. T. EIRD
W. T. BEATY	K. B. HOOK
J. C. CLARK	H. C. HILLIARD
C. A. COX	C. W. KIPKA
L. R. CATHIER	E. E. KIPKA
A. A. DOEFLEMYER	E. F. KNIGHT
	D. F. KNIGHT
	W. P. LAWRENCE, JR.
	A. P. LEWIS
	W. G. LEWIS
	T. E. LOWRY
	S. E. MADREN
	R. N. MOSES
D. F. MANESS	ELWOOD SMITH
G. O. MANN	F. A. SMITH
M. A. NETHERY	C. P. THOMPSON
L. W. REGISTER	J. P. VICKERS
E. F. RHODES	L. C. WILLIAMS
D. W. SHEPHERD	H. T. WILLIAMS
H. S. SHEPHERD	AVTCH YORK

PHI PSICLI



PHILOLOGIAN LITERARY SOCIETY ENTERTAINERS



ANNUAL ENTERTAINMENT
OF THE
Philologian Literary Society

WHITLEY AUDITORIUM, ELON COLLEGE, N. C.

Thursday Evening, November 29, 1928

8:00 p. m.

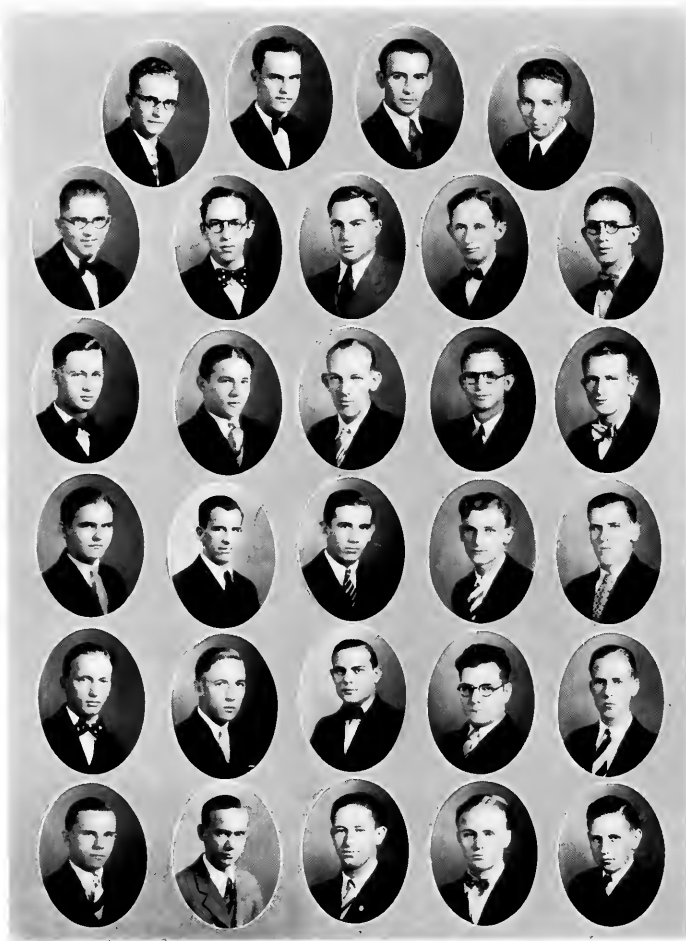
PROGRAM

Welcome Address	W. P. LAWRENCE, JR.
Reading: "The Landing of the Pilgrims"	L. C. WILLIAMS
Oration: "The First Thanksgiving"	W. T. BEATTY
Song	
Washington on Thanksgiving	T. G. ANDREWS
Violin Solo	E. F. RHODES
Lincoln on Thanksgiving	K. B. HOOK
Song	
The Spirit of Modern Thanksgiving	D. W. SHEPHERD
<i>(Scenes—D. P. BARRETT, A. A. DOFFLEMYER, E. F. KNIGHT, GLENN LEWIS, L. W. REGISTER, AND FRED SMITH.)</i>	

Historical: "The earliest harvest Thanksgiving in America was kept by the Pilgrim Fathers at Plymouth in 1621, and was repeated many times during that and the ensuing century; Congress recommended days of Thanksgiving annually during the Revolution and in 1784 for the return of peace—as did President Madison in 1815. Washington appointed such a day in 1789 after the adoption of the Constitution and in 1795 for the general benefits and welfare of the nation." President Lincoln issued in 1863 a proclamation appointing the last Thursday in November as Thank giving Day; and this was the first of an unbroken series of similar proclamations which have made Thanksgiving Day an American Institution.

ENTERTAINMENT COMMITTEE

	E. F. RHODES, <i>Chairman</i>	
CECIL COX	RAY N. MOSES	H. S. SHEPHERD
	TOM LOWERY	
	MARSHALS	
	C. P. THOMPSON, <i>Chief</i>	
CARROLL CLARK	DENNIS KNIGHT	ALTON LEWIS
	AYICH YORK	



CLIO LITERARY SOCIETY





Clio Roster

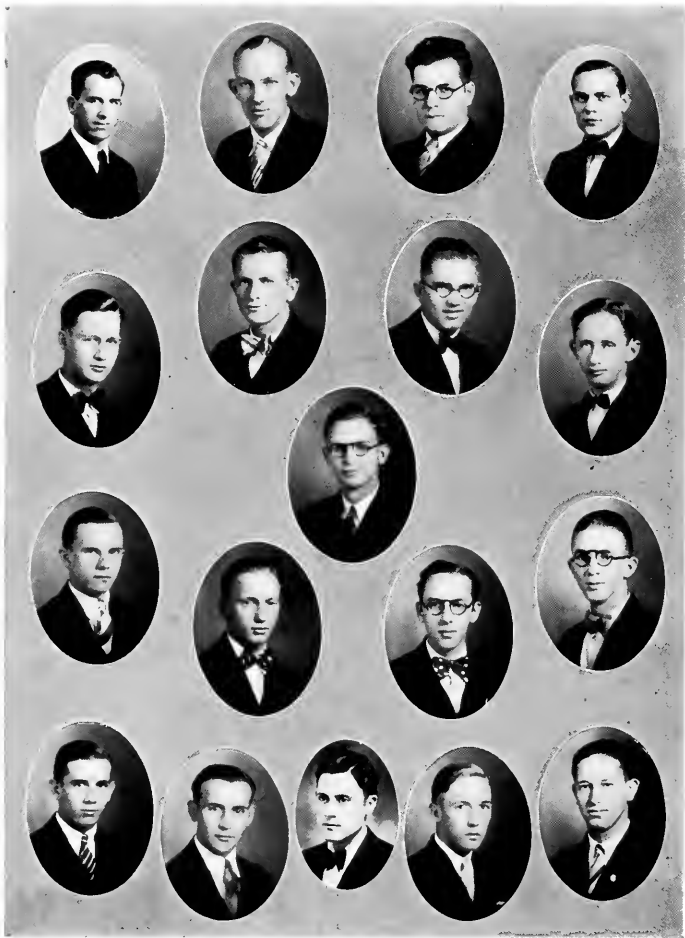
T. R. BENTON
 DANIEL BOONE
 ROBERT BOYD
 W. E. BRILL
 L. J. COLCLOUGH
 MIGUEL CAPO
 LOUIS CAGLE
 JACK CHANDLER

ROMIE DAVIS
 OLLIE DEATON
 FRED DICKERSON
 DELOS ELDER
 T. D. EURE
 C. C. FOUSHEE
 E. A. GUNN
 WYATT HIGHSMITH

ELIJAH JONES
 R. H. JOHNSON
 A. W. LANTON
 W. G. LOCKHART
 R. C. LILLY
 ROBERT MORPHIS
 LEWIS MOSLEY
 E. R. NICHOLS

F. N. PARKER
 W. J. PARKER
 J. R. PARKS
 B. P. RAKESTRAW
 G. E. RING
 H. G. ROBERTSON
 A. A. RODRIGUEZ
 C. N. ROBERTS

ROY RICHARDSON
 HOWARD SMITH
 JAMES STEWART
 C. J. THOMAS
 EDWIN THOMPSON
 GARDNER UNDERHILL
 T. W. WATSON
 CECIL WATTS



CLIO LITERARY SOCIETY ENTERTAINERS



ANNUAL ENTERTAINMENT
OF THE
Clio Literary Society

WHITLEY MEMORIAL AUDITORIUM, ELON COLLEGE, N. C.

February 22, 1929

8:00 p. m.

Welcome Address	A. A. RODRIGUEZ
Ensemble	SOCIETY
Oration	C. C. FOUSHEE
Quartette . . . G. D. UNDERHILL, A. W. LAXTON, T. R. BENTON AND J. E. STEWART	
Violin Solo	A. W. LAXTON
Poem	F. N. PARKER
Oration	W. G. LOCKHART
Reading	T. D. EURE
Dramatic Reading	H. G. ROBERTSON
Quartette . . . G. D. UNDERHILL, A. W. LAXTON, T. R. BENTON, J. E. STEWART	

OXFORD DEBATE

Query

Chairman of Debate: C. C. FOUSHEE

Affirmative

DELOS ELDER
WYATT HIGHSMITH

Negative

LEWIS CAGLE
ROY RICHARDSON

USHERS

OLLIE DEATON, *Chief*

J. R. PARKS	B. P. RAKESTRAW
LEO J. COLCLOUGH	FRID L. DICKERSON

DECORATION COMMITTEE

ROBERT BOYD, *Chairman*

W. E. BRILL	J. H. SMITH
-------------	-------------



PSYKALEON LITERARY SOCIETY



ANNUAL ENTERTAINMENT
 OF THE
Psykaleon Literary Society

WHITLEY MEMORIAL AUDITORIUM, ELON COLLEGE, N. C.

Friday Evening, January 18, 1929

8:00 p. m.

Welcome CLARA UNDERWOOD

Chorus
 VIOLA WORSLEY, FRANCES RING, MARY RULD, ELIZABETH CARPER, ALMA
 KIMBALL, RUTH STEARNS, CLARA UNDERWOOD, MABLE COGHILL, ADNA
 LANE BRUTON, SALLY ELDER, ALBERTA ROBERTS, ANNA VIRGINIA BRITT,
 RUTH BATESON, MOYD FIFE, CHARLOTTE ROBERTS, CLARICE DICKERSON.

January, Past and Present IDELL JONES

Monologue ESTELLE WILLIAMS

Review of Life and Works of Ellen Glasgow WAUTELL LAMBETH

Musical Reading MERRILL CAVINESS

Essay REBECCA TAYLOR

Chorus

PROGRAM COMMITTEE

ALMA KIMBALL, *Chairman*

RUTH ALEXANDER

CLARICE GUNN

MOYD FIFE

MARSHALS

RUTH ALEXANDER, *Chief*

CLARA SHARPE

RUTH VICKERS

MARIE WARD

CLARICE GUNN





PSI PHI EPSILON LITERARY SOCIETY



Psiphelian Roster

LA RUE BRANN
 MARGARET BRIGGS
 MARGARET BRULON
 EDITH CLARK
 ALTA DICK

LILLIAN FOUST
 MELBA GROGAN
 SADIE GUNTER
 CHRISTINE HORNADAY
 DOLPHINE IRLEY

MILDRED JOHNSON
 ELLA KEYSER
 CATHERINE LEMMOND
 MARGARET LINEBERGER
 MARY LINEBERGER
 EDITH LOCKEY
 LONNIE MCINTYRE
 NELLIE WHITE

VELMA O'CONNELL
 EVELYN RICHARDSON
 BIRDIE ROWLAND
 LENA RUSSELL
 GLADYS SPOON

LOUISE SPRINGS
 EVA SYKES
 CORNELIA TROXLER
 JEWEL TRUITT
 GLADYS WHITE

ANNUAL ENTERTAINMENT
 OF THE
Psiphelian Literary Society

WHITLEY MEMORIAL AUDITORIUM, ELON COLLEGE, N. C.

Monday Evening, April 1, 1929
 8:00 p. m.

PROGRAM

Welcome	LENA RUSSELL
History of Psiphelian Literary Society	GLADYS SPOON
Chorus	PSIPHELIAN GIRLS
Humorous Reading	GLADYS WHITE
Essay	EVELYN RICHARDSON
Solo	ELLA MARIE KEYSER
Reading	ALTA DICK
Psiphelian Song	PSIPHELIAN GIRLS

PROGRAM COMMITTEE

EVA SYKES, *Chairman*

MAR LINBERGER

CHRISTINE HORNADAY





EDITORIAL STAFF

- C. W. KIPKA *Editor-in-Chief* C. C. FOUSHEE *Managing Editor*
 G. D. COLCLOUGH *Alumni Editor*

BUSINESS STAFF

- D. P. BARRETT, JR. *Business Manager* T. D. EURE *Advertising Manager*
 ROBERT BOYD *Assistant Business Manager* DELOS ELDER *Assistant Adv. Manager*

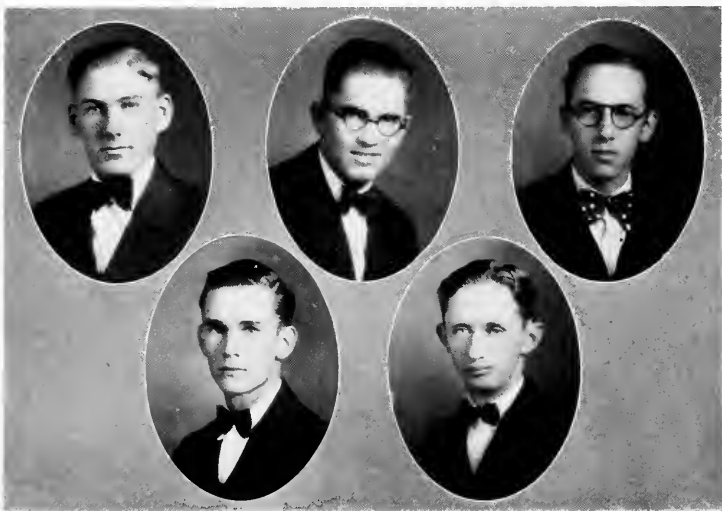
CIRCULATION STAFF

- L. W. REGISTER ELIZABETH CARPER CECIL WATTS VELMA O'CONNELL

REPORTERS' CLUB

- K. B. HOOK, *Head Reporter*
 R. G. DAVIS EVA SYKES VIRGINIA LINEBERGER A. A. RODRIGUEZ
 T. R. BENTON H. S. SHEPHERD ESTELLE WILLIAMS HOWARD SMITH
 REBECCA TAYLOR

J. W. BARNEY, *Faculty Adviser*



Intercollegiate Debaters

ELON vs. EMORY-HENRY

Query: Resolve that a substitute for trial by jury should be adopted.

AFFIRMATIVE AT EMORY-HENRY

H. G. ROBERTSON

R. N. MOSES

NEGATIVE AT ELON

C. C. FOUSHIE

D. W. SHEPHERD



RELIGIOUS ORGANIZATIONS





Ministerial Association

OFFICERS

RAY N. MOSES	<i>President</i>
DANIEL BOONE	<i>Vice-President</i>
A. A. DOFFLEMYER	<i>Secretary</i>
J. H. SMITH	<i>Treasurer</i>

MEMBERS

CARL KLAPP	E. F. KIPKA
W. E. BRILL	H. C. HILLIARD
C. C. FOUSHEE	S. E. MADREN
R. H. JOHNSON	B. P. RAKESTRAW

H. G. ROBERTSON
 D. W. SHEPHERD
 F. A. SMITH
 G. D. UNDERHILL
 S. B. WILSON
 L. A. NALL



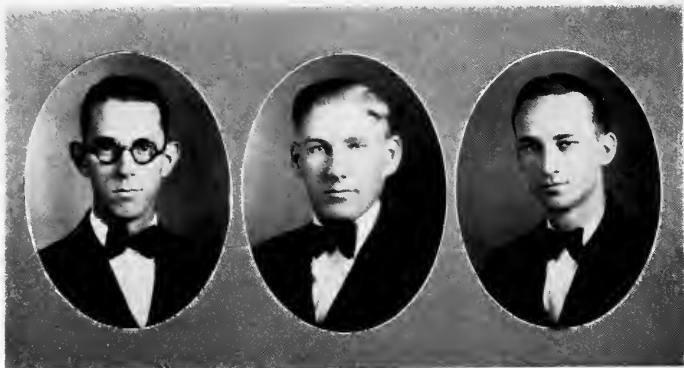


Young Women's Christian Association

OFFICERS

JEWELL TRUITT	<i>President</i>
ALBERTA ROBERTS	<i>Vice-President</i>
MARGARET LINBERGER	<i>Secretary</i>
MARY RAWLS JONES	<i>Treasurer</i>



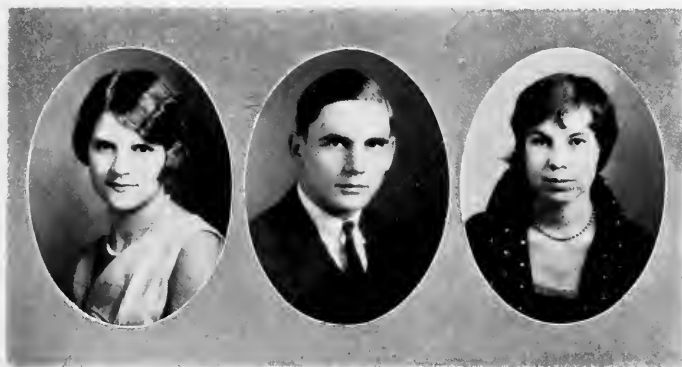


Young Men's Christian Association

OFFICERS

D. W. SHEPHERD *President*
C. A. COX *Vice-President*
L. W. REGISTER *Secretary-Treasurer*





Christian Endeavor

OFFICERS

PHALTI LAWRENCE *President*
MILDRED JOHNSON *Vice-President*
ALMA KIMBALL *Secretary*

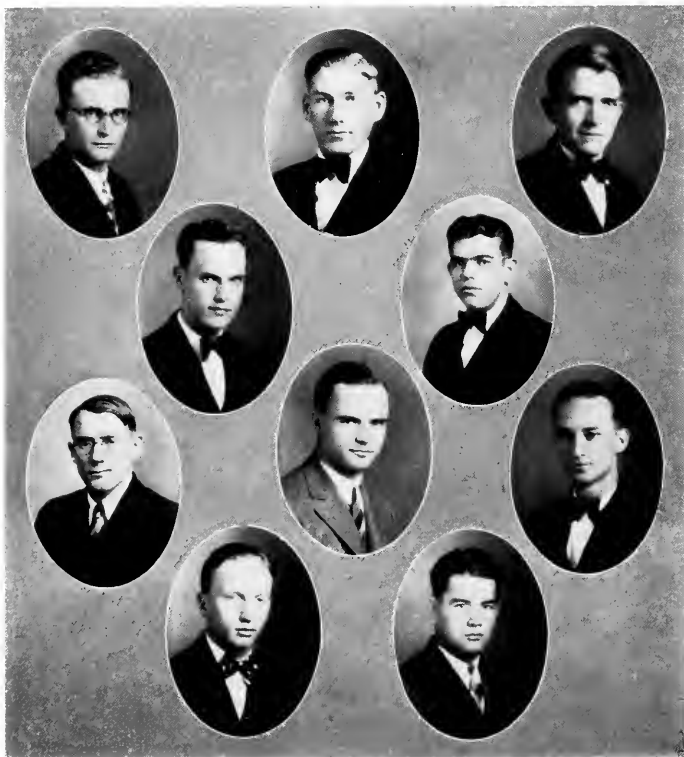


Religious Activities Cabinet

OFFICERS

BIRDIE ROWLAND	<i>President</i>
ROMIE G. DAVIS	<i>Vice-President</i>
CLARICE GUNN	<i>Secretary</i>
D. P. BARRETT, JR.	<i>Treasurer</i>



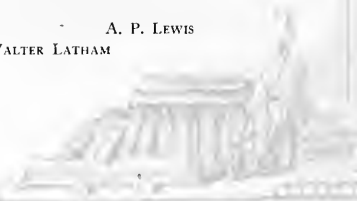


Student Senate

D. W. SHEPHERD *President*
 C. J. THOMAS *Vice-President*
 S. S. JACKSON *Secretary*
 L. W. REGISTER *Treasurer*

MEMBERS

R. C. DAVIS C. P. THOMPSON A. P. LEWIS
 R. M. GREEN WALTER LATHAM





Student Council

MARION NALLE *President*
 EVA SYKES *Secretary*
 CHARLOTTE ROBERTS *Treasurer*

MEMBERS

CLARICE GUNN
 ALMA KIMBALL

EVA PARKER
 VIRGINIA BROWNE

SUE ELLA WATTS
 MABEL COGHILL



1929 Phipsicli Assistants

OFFICERS

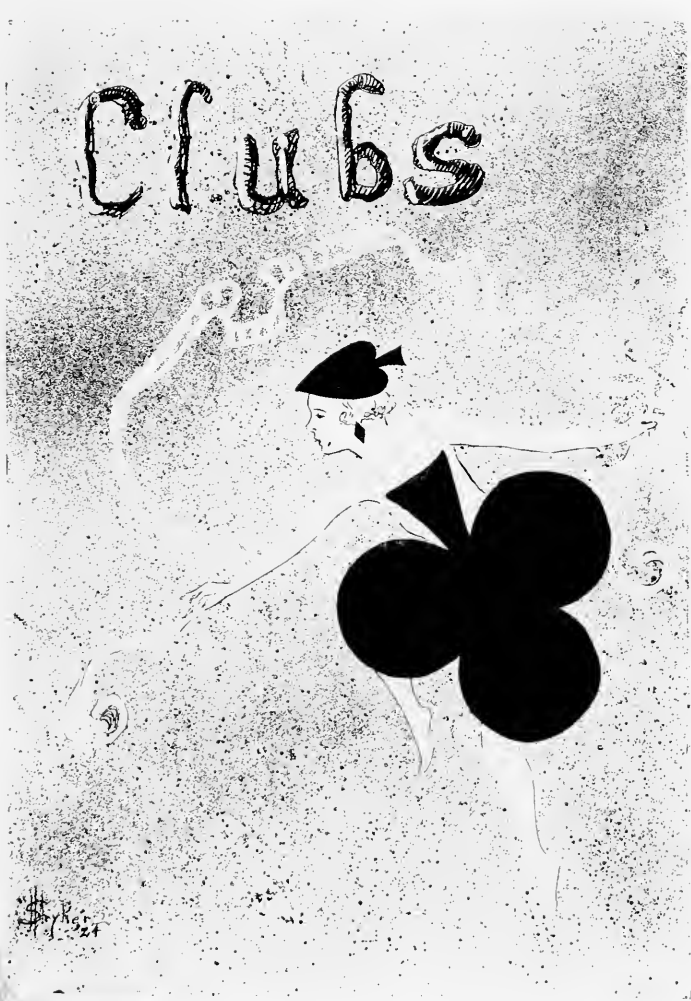
R. E. SIMS, JR.	<i>Associate Editor</i>
DELOS ELDER	<i>Advertising</i>
W. H. ELLIS	<i>Advertising and Art</i>
L. W. REGISTER	<i>Bookkeeper</i>

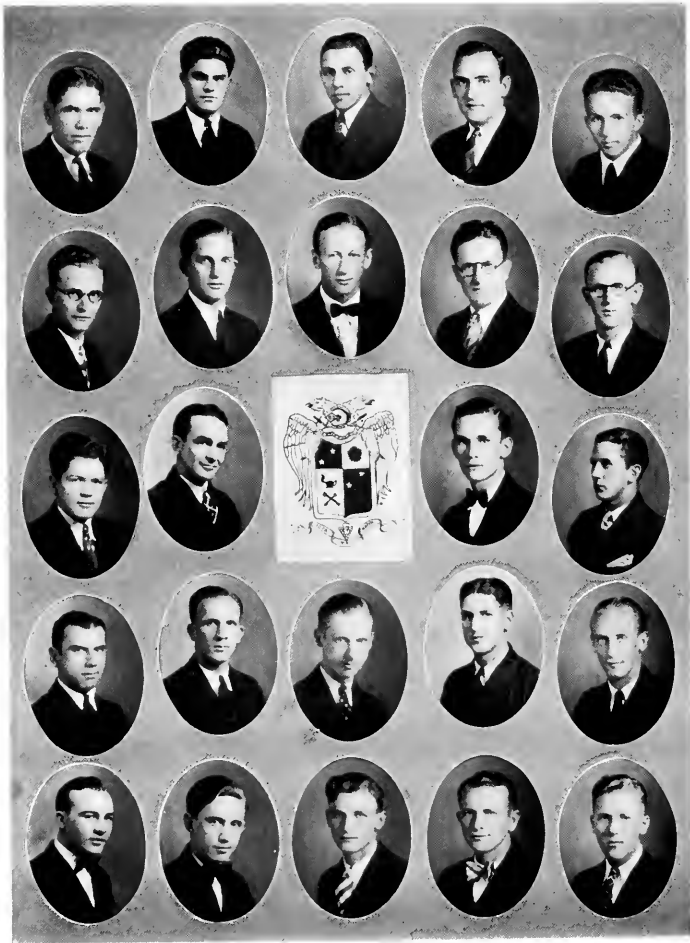
This volume of the Phipsicli would not be complete without giving credit to the above gentlemen. The success of the annual is, to a great degree, due to their untiring efforts, and we are sure that those that will return next year will be a great asset to the new staff.

EDITOR



Clubs





IOTA TAU KAPPA

Iota Tau Kappa

BROTHERS IN COLLEGE

C. V. BRIGGS
W. T. BEATTY
HOWARD BRIGGS
FRED CADDELL
PAUL CADDELL
J. C. CLARK
H. T. EFIRD
WM. H. ELLIS

T. D. EURE
DACE W. JONES
ELIJAH JONES
G. D. KELLY
C. W. KIPKA
E. E. KIPKA
ED McPIERSON
D. L. NEWMAN

G. E. RING
R. E. SIMS
FRED SMITH
C. J. THOMAS
J. W. VAN HOOK
L. P. WILKINS
L. C. WILLIAMS
R. C. WRIGHTMAN, JR

HONORARY MEMBERS

DR. W. A. HARPER PROF. J. W. BARNEY DEAN A. L. HOOK DR. N. F. BRANNOCK
PROF. RALPH B. TOWER

BROTHERS OUT OF COLLEGE

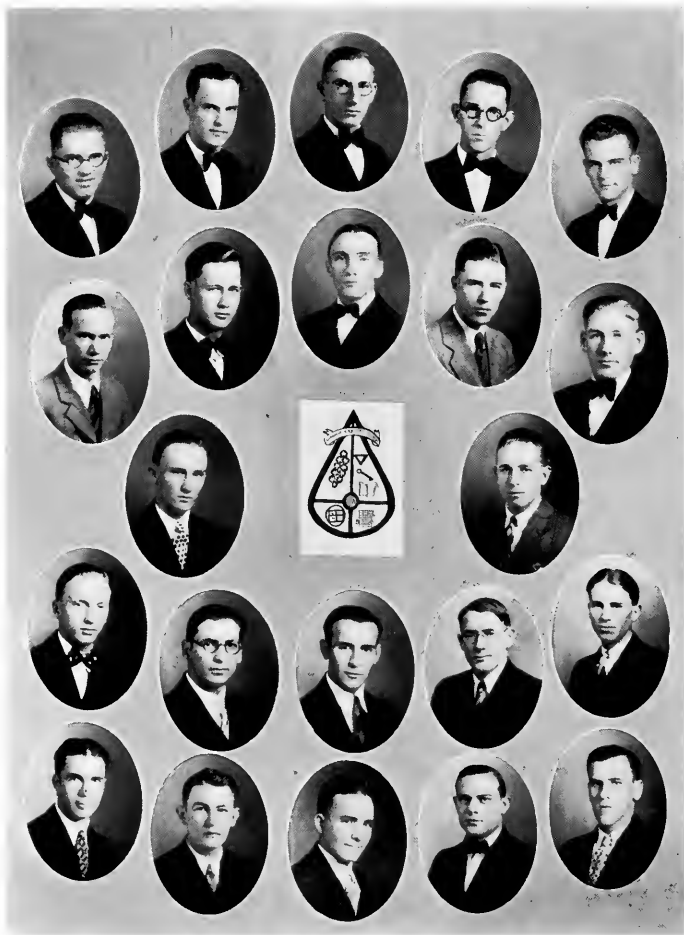
F. J. ALSTON
T. H. ANDREW
W. J. APPLE
H. A. BRANNER
J. R. BARKER
G. W. BOCK
R. B. BYRD
M. W. CARROW
RALPH COGGINS
CONRAD DONNELL
W. C. ELDER
D. E. EURE

J. M. FIX, JR.,
E. F. GILLIAM
J. L. HIATT
A. L. HOLT
B. D. JONES
DARDEN JONES
G. A. KIRKLAND
J. C. LATHAM
JONNIE LANKFORD
E. W. McCAULEY
E. P. McLFOD
G. R. MILLER
E. L. PARKERSON
J. A. PARKS

*K. W. PATTON
C. E. SIDES
C. H. SLAUGHTER
E. E. SNOTHERLY
A. J. STRUM, JR.
M. G. STANLEY
N. V. RAUB
P. C. WALKER
G. L. WILLIAMS
W. L. WOODIE
W. W. WOODIE
S. D. WOODIE

*DECEASED





ALPHA PI DELTA



Alpha Pi Delta

BROTHERS IN COLLEGE

ROMIE G. DAVIS
 JAMES B. BROWN
 D. W. SHEPHERD
 C. C. FOUSHEE
 H. S. SHEPHERD
 OLLIE W. DEATON
 G. AYICH YORK
 A. W. LAXTON

T. G. ANDREWS
 E. P. ISLEY
 K. B. HOOK
 M. A. NETHERY
 A. P. LEWIS
 T. R. BENTON
 C. A. FOX
 PAUL MAGEE
 L. J. COLCLOUGH

HERMAN TRUITT
 E. F. KNIGHT
 NORMAN CAMERON
 W. G. LOCKHART
 W. G. LEWIS
 W. G. SMITH
 EDWIN A. GUNN
 URAL WATSON

HONORARY MEMBERS

PROF. T. E. POWELL

PROF. A. R. VANCELAWE

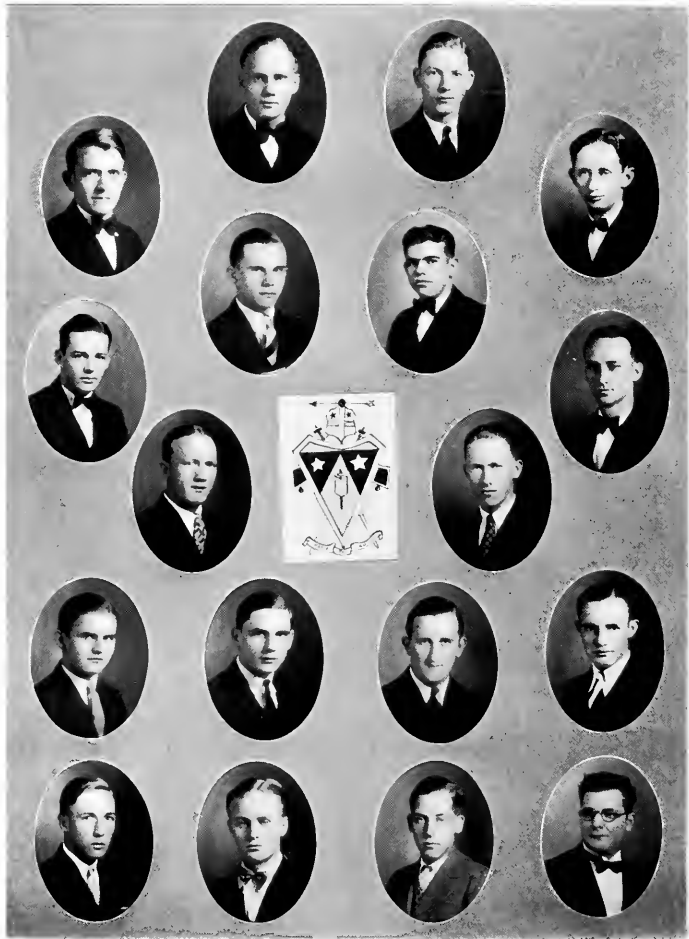
BROTHERS OUT OF COLLEGE

J. FOREST QUALLS
 W. L. MCLEOD
 E. MILLIARD QUALLS
 D. YORK BRANNOCK
 FERRY LEE GIBBS
 THOMAS V. HUEY
 MARVIN M. JOHNSON

ROBERT M. HOOK
 H. E. CRUTCHFIELD
 M. A. MCLEOD
 A. B. JOHNSON
 L. E. ANGEL
 W. R. MAXWELL
 LUTHER BROWDER
 B. L. GREEN
 FRANK H. ALEXANDER

P. G. HOOK
 RICHARD E. BRITTLE
 C. CARL DOLLAR
 DEWEY R. MAST
 S. GUY ALEXANDER
 S. PERCY HUDSON
 J. M. GREEN





KAPPA PSI NU



Kappa Psi Nu

BROTHERS IN COLLEGE

D. P. BARRETT, JR.	MASTEN GREEN	A. A. DOFFLEMYER	J. M. LOWRY
G. F. WOMBLE	C. P. THOMPSON	A. A. RODRIGUEZ	E. R. NICHOLS
W. P. LAWRENCE, JR.	L. C. DOSTER	L. W. REGISTER	JACK CHANDLER
H. G. ROBERTSON	J. D. LEE, JR.	ROY RICHARDSON	JACK MOSLEY
ELBERT RHODES	T. E. LOWRY	J. R. PARKS, JR.	J. W. CORBETT
		J. C. WATTS	

BROTHERS IN FACULTY

C. M. CANNON	GEORGE D. COLCLOUGH	M. W. HOOK
	DAVID BROWN HARRELL	C. JAMES VELIE

BROTHERS OUT OF COLLEGE

S. H. ABELL	J. L. FLOYD	M. L. PATRICK	R. F. MORTON
E. W. AUMAN	J. M. FARMER	E. H. RAINEY	J. B. NEWMAN
H. C. AMICK	W. M. GARRISON	R. S. RAINEY	R. H. GUNN
E. ABELL	C. W. GORDON	M. Z. RHODES	J. E. WATTS
F. D. BALLAD	J. D. GORRELL	P. D. RUDD	D. O. SAUNDERS
J. T. BANKS	I. O. HAUSER	H. L. SCOTT	G. F. WOMBLE
J. D. BARBER	C. W. HOOK	W. T. SCOTT	J. ALLEN WALKER
A. L. BRINKLEY	F. H. HUNTER	H. G. SELF	J. P. MCNEIL
L. M. CANNON	L. F. JOHNSON	R. R. SIDES	H. RICHARDSON
A. L. COMBS	O. C. JOHNSON	W. B. FERRELL	C. E. NEWMAN
C. J. CRUTCHFIELD	W. D. LAMBETH	R. W. UTLEY	MELVIN WYRICK
R. D. CLEMENTS	P. E. LINDLEY	L. V. WATSON	J. V. WOMBLE
T. S. CRUTCHFIELD	W. A. LINDLEY	G. C. WHITE	E. W. VICKERS
J. N. DENTON	S. M. LYMAN	M. J. W. WHITE	T. B. HAMMERICK
J. H. DOLLAR	J. L. FINCH	C. L. WALKER	DANIEL NORTHCUTT
D. H. DOFFLEMYER	J. M. McADAMS	M. G. WICKER	J. B. UTLEY
L. B. EZELL	K. R. McCALMAN	T. E. HANNER	J. R. WALKER
B. W. EVERETTE	J. E. McCAULEY	H. M. LYNCH	C. JAMES VELIE
W. M. FERRIS	G. C. MANN	E. C. WHITE	DAVID BROWN HARRELL
J. W. FIX	W. E. MOON		G. D. COLCLOUGH





SIGMA PHI BETA



Sigma Phi Beta

BROTHERS IN COLLEGE

ROBERT BOYD
FRED I. DICKERSON
J. L. FOSTER, JR.
W. R. HINTON, JR.
H. W. HARTLEY

SIDNEY F. JACKSON
LEON JONES
WALTER C. LATHAM
ROBERT W. MORPHIS
F. H. MITCHELL
F. N. PARKER
HINTON ROUNTREE

J. W. RICHE
A. C. STEPHENSON
A. M. STEPHENSON
J. E. STEWART
R. C. WATSON

HONORARY MEMBERS

F. B. CORBOY

C. C. FONVILLE

DR. GILMER HOLLAND

PROFESSOR L. D. MARTIN

M. L. GRAY

BROTHERS OUT OF COLLEGE

R. W. ANDREWS
F. W. ALEXANDER
H. S. ALEXANDER
J. O. ATKINSON, JR.
DWIGHT BELOUGHER
A. I. BRAXTON
PAUL BRAXTON
L. J. BRAY
A. H. BROWN
R. C. BROWN
G. A. BROWN
P. B. BRAWLEY
H. A. CLARK
W. S. CARDWELL
ROY CATHEN
J. E. CORBITT
T. S. CORBITT
L. E. FESMIRE
C. P. FLYNN

A. B. FOGLEMAN
F. K. GARVEY
D. E. TURNER, JR.
H. L. TROTMAN, JR.
H. B. ROUNTREE
G. D. UNDERWOOD
J. B. GAY, JR.
W. F. GREENWOOD
W. F. GODWIN
O. B. GORMAN
A. N. GREEN
W. C. GRIFFIN
D. L. HARRELL
O. H. HENDERSON
T. B. HENDERSON
W. D. HENDERSON
C. HUMPHREYS
C. R. HUTCHINSON
B. B. JOHNSON

E. S. JOHNSON
H. H. JOHNSON
C. L. KIMBALL
D. B. LONG
W. E. MARLETTE
D. D. MARTIN
C. P. MACNALLEY
K. B. MEADOWS
DAVID MILLER
J. F. VOLIVER
J. C. WHITESELL
P. J. WHITESELL
C. M. MILLER
S. R. MOFFITT
R. V. MORRIS
L. T. MCCLOUD
DR. N. G. NEWMAN
T. B. PARKS

L. J. PERRY
E. G. PURSELL
J. F. RAPER
C. R. REAVIS
C. R. READ
O. T. ROBERTSON
E. E. SECHRIST
J. J. SIMILEE
I. W. SIMPSON
I. E. SMITH
D. D. SNIPES
W. G. STONER
R. V. STUART
FORREST SWANSON
W. R. THOMAS
H. E. WHITE
W. W. WALKER
WORTH B. WICKER
DAN D. WICKER





DELTA UPSILON KAPPA



Delta Upsilon Kappa

SISTERS IN COLLEGE

MABEL BARRETT	ALMA KIMBALL	ANN RAWLS	LILLIAN UNDERWOOD
MABEL COGHILL	WAUPELL LAMBETH	FRANCES RING	ESTELLE WILLIAMS
MARY RAWLS JONES	FERN LASLEY	BIRDIE ROWLAND	BEILE WICKER
ANNIE LAURA HOLLAND	LOIS McADAMS	CLARA SHARPE	CHRISTINE WICKER
		CLARA UNDERWOOD	

HONORARY MEMBERS

LILA NEWMAN	PAULINE SHOOPE	CATHERINE BELLIS
-------------	----------------	------------------

SISTERS OUT OF COLLEGE

RUBY ATKINSON	RUTH KIMBALL	MARGARET ROWLAND
ALBERTA ATKINSON	ROSEBUD KIMBALL	MRS. SMITH ROBERTSON
MINNIE ATKINSON	MRS. AUBREY KELLEY	MRS. MILLS RIDDICK
MRS. JOHN BARNWELL	CLARICE LINCOLN	HAZEL ROSEMOND
OLYN BARRETT	MRS. E. R. LANE	MRS. P. D. RUDD
MRS. L. J. BRAY	ALLENE MAY	MRS. H. C. ROSS
MRS. LEGETTE BLYTHE	MARGARET MOFFITT	MRS. LONNIE SIDES
JULIA CLEM	MRS. MARK McADAMS	DOROTHY SHORTRIDGE
LOUISE COOKE	EUNICE MORROW	MARY STRADEE
ANN CURTIS	EMMA MORGON	MRS. HERBERT SHOLTZ
FREDA DEMMICK	MRS. L. D. MARTIN	MRS. J. H. TRUITT
MRS. WM. DIXON	MRS. P. G. MIDDLETON	PLACYDE THOMPSON
LALAH DURHAM	MRS. E. P. McLEOD	PEARLE TETEE
MRS. ROBERT ETHERIDGE	HANNAH NEWMAN	ESSIE M. TRUITT
MRS. JACK EDWARDS	GWENDOLYN PATTON	MRS. G. D. UNDERWOOD
MARY LEE FOSTER	ANNA PHILLIPS	MARY LEE WILLIAMS
MRS. PAUL FULTON	GLADYS PEACE	IDA WILKINS
JANICE FULGUM	MRS. GEORGE PARKERSON	MRS. LYMAN WILKINS
MRS. MILLS GREEN	MRS. W. S. PERSON	MRS. J. E. WHITESSELL
MRS. J. B. GAY, JR.	KATHLEEN PARKS	FLORENCE WHITELOCK
LILLIAN HARRELL	ANITA PARKS	LOUISE WATKINS
	ALMA ROUNTREE	
	GRAHAM ROWLAND	





TAU ZETA PHI



Tau Zeta Phi

SISTERS IN COLLEGE

MARY BARNWELL
MARGARET BRIGGS
MARGARET BRUTON
ANNIE JUNE HORNADAY

CHRISTINE HORNADAY
RUBY HUFFINES
MILDRED JOHNSON
MARGARET LINEBERGER
VIRGINIA MORTON
RUTH MORTON

EVA PARKER
GLADYS SPOON
HELEN TURNER
GLADYS WHITE

HONORARY MEMBERS

Mrs. FRANCES J. RING

Mrs. C. JAMES VELIE

SISTERS OUT OF COLLEGE

NANNIE ALDRIDGE
MILDRED ARLEDGE
LUCY AUSTIN
Mrs. LANE ATKINSON
MARJORIE BRUTON
JUDITH BLACK
LUCILE CARDWELL
ANNE COLEMAN
OLA KING COWING
Mrs. J. H. DOLLAR
SARA DEATON
LUCY DICK

MARY DICK
Mrs. HERMAN EDGE
FANNIE GLENN ELDER
ANNIE LEE FLOYD
Mrs. H. G. FLOYD
NANNIE GRAHAM
Mrs. M. W. HOOK
Mrs. H. O. HORNE
MYRTLE ISLEY
Mrs. OTIS KING
BERTHA LITTLE
RUTH LYERLY
MAMIE MOORE

BUELAH MORTON
Mrs. G. G. MILLER
BESSIE MARTIN
ELIZABETH MCCOLLUM
MILDRED MCPHERSON
MARGARET NEBLETTE
NELL ORR
CAROLINE POWELL
*RUBY ROWLAND
*MYRTLE VICKERS
MADGE WOODS
GLADYS WOODS

*DECEASED.





BETA OMICRON BETA

Beta Omicron Beta

SISTERS IN COLLEGE

RUTH ALEXANDER
ALBERTA ROBERTS
VIRGINIA BROWN
IDELL JONES
SUE ELLA WATTS

MARJORIE MOORE
NELLIE WHITE
VIRGINIA HARDEN
MARY BRANNOCK
NANNIE STOUT
LOIS MCFARLAND

SALLY ELDER
EVELYN YATES
MARION NALLE
DOLLY WILLIAMS
CHARLOTTE ROBERTS

HONORARY MEMBERS

MISS FLORENCE FISHER

MRS. W. A. HARPER

JEANETTE STOUT

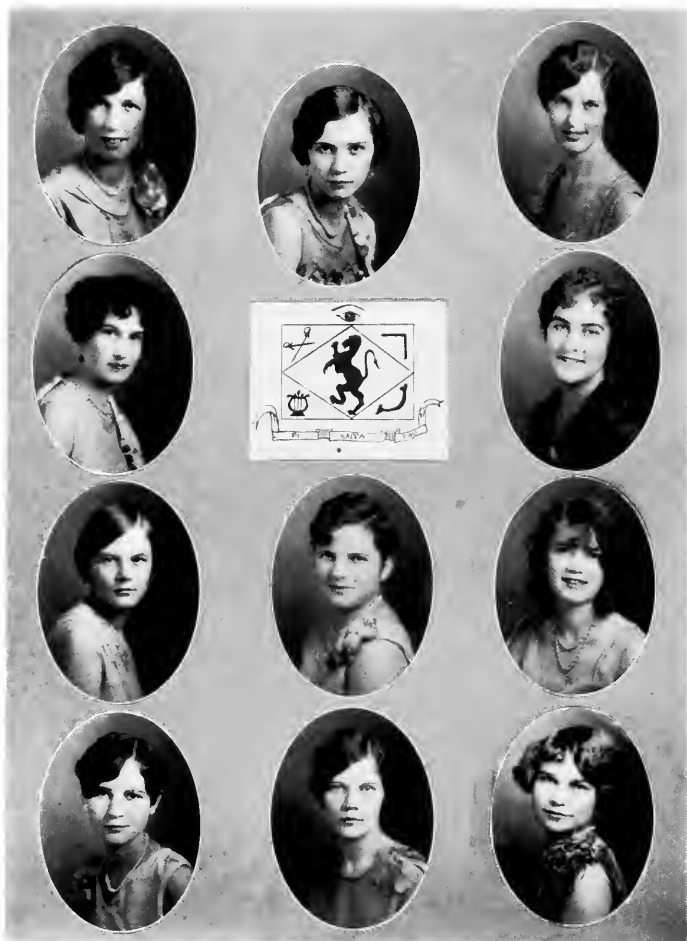
SISTERS OUT OF COLLEGE

VICTORIA ADAMS
DOROTHY BELVIN
EFFIE BOWDEN
MRS. MAURINE BRIGGS
MRS. C. M. CANNON
MRS. L. M. CANNON
LOIS CORBETT
PATTIE COGHILL
CARMEN COLLIER
ESSIE COTTEN
GRACE CROCKETT
RUTH CRAWFORD
BESSIE DALE
MRS. ROBERT ERNST
WILSON GATEWOOD

MRS. H. S. HARDCASTLE
MRS. MARVIN HOLT
MALVA HIGH
MAUDE HENDRICK
ELSIE JONES
KATHERINE JOHNSON
ESTELLE KELLY
MRS. S. L. LANE
MRS. G. M. LUPO
MRS. T. E. POWELL
MRS. EUNICE R. POWELL
HELEN RHODES
PEARL REYNOLDS
ANNIE SIMPSON
GLADYS SIMPSON
NOVIE SMITH
CALLIE SPRULL

GLADYS SPRULL
FRANCES STERRETT
GRACE STOUT
EDNA STOUT
MARY STOUT
WILEY STOUT
MARY HALL STRYKER
MARGARET TERRY
MRS. DENNIS TUTTLE
FRANCES TURNER
KATE WHEELER
RUTH WALKER
MARY ADDIE WHITE
MARGUERITE YOUNG
MARY GRAHAM LAWRENCE





PI KAPPA TAU



Pi Kappa Tau

MEMBERS IN COLLEGE

LUCY BOONE
FLORENCE
ALTA DICK
EUGENIA GREEN

MADGE GREEN
MARY HORNE
ETTIE HARVEY
ELLA KEYSER

LOUISE MCPHERSON
MARGARET ROBERTSON
LENA RUSSELL
GRACE WRIGHT

HONORARY MEMBERS

MRS. R. B. TOWNSLEY MISS HATTIE E. BROWN
MRS. B. W. EVERETTE MISS EMILY JOHNSON
MISS OLLIE STADLER

MEMBERS OUT OF COLLEGE

CLARICE ALBRIGHT
MABEL ALEXANDER
ESTHER BROOKSHIRE
LOIS ADAMSON
MABEL HOLT
MABEL MICHAEL
HAZEL AUMAN
LYDE BINGHAM
MRS GRADY BROWN
MRS. HARRY BUCHANAN
TINSLEY BRYANT
CLARICE CARPENTER

ANNIE CARTER
MRS. CLAUDE CHEEK
MRS. HAZEL COOK
MILDRED DOZIER
NANNIE SUE DUNN
MRS. J. N. FARLOW
MRS. L. C. HOOPER
JEWEL HUGHES
PATTY HURLEY
SALLIE KATE INGRAM
LUCY McCARGO
MARIE NOBLES
SALLIE MAE OLIVER

VERDIE PHILLIPS
MARY PRICE
SARA PRICE
TORA RUDD
ELSIE TEAGUE
RUTH VONCANNON
BESS WALKER
LILLIAN WALKER
ALICE WEBER
MRS. E. WHEELER
TYRA WRIGHT
LOUISE HOMEWOOD





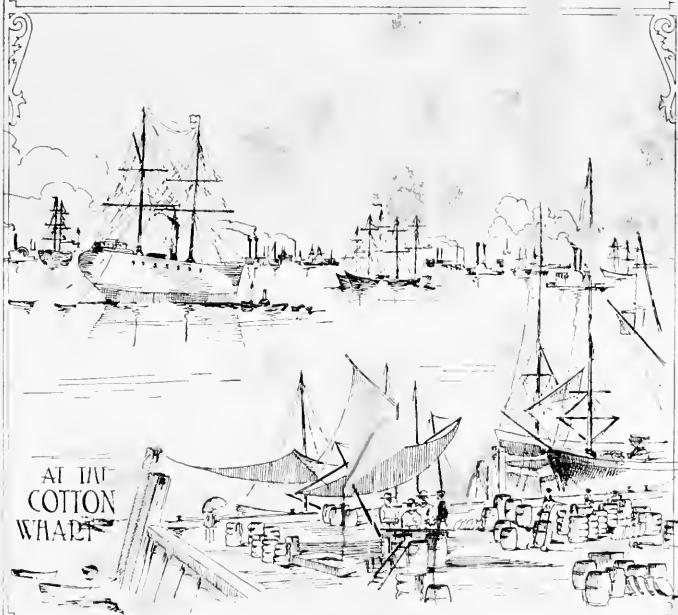
Pa. lenic Council

OFFICERS

W. P. LAWRENCE, JR.	lent	<i>Kappa Psi Nu</i>
ROMIE G. DAVIS, VI	it	<i>Alpha Pi Delta</i>
BIRDIE MARY ROWLAND,	tary-Treasurer	<i>Delta Upsilon Kappa</i>
R. E. SIMS, JR.	<i>Iota Tau Kappa</i>
MARGARET ROBERTSON	<i>Pi Kappa Tau</i>
GLADYS WHITE	<i>Tau Zeta Phi</i>
SIDNEY F. JACKSON	<i>Sigma Phi Beta</i>
MARJORIE MOORE	<i>Beta Omicron Beta</i>



COMMERCE



AT THE
COTTON
WHARF

BUSINESS ADMINISTRATION



Economics Club

Fall Semester

H. T. EFIRD *President*
 R. E. SIMS *Vice-President*
 MARJORIE MOORE . . . *Secretary and Treasurer*
 W. L. REGISTER . . . *Assistant Sec. and Treas.*

Spring Semester

W. T. BEATTY *President*
 W. L. REGISTER *Vice-President*
 LENA RUSSELL *Secretary and Treasurer*
 MARJORIE MOORE . . . *Assistant Sec. and Treas.*

RALPH B. TOWER

Professor of Economics and Business Administration

MEMBERS

EUNICE AMAN
 E. E. BLACK
 ROBERT BOYD
 C. V. BRIGGS
 FRANK BROOKS
 STROUD BROOKS
 NORMAN H. CAMERON
 R. C. DAVIS
 L. C. DOSTER
 W. M. DUNCAN
 D. M. ELDER
 W. H. ELLIS
 HARRISON GOODMAN
 ROY M. GREEN
 E. G. GREGG
 EUGENIA GRUBB
 EDWIN GUNN
 ZEB HARRINGTON

ETTIE HARVEY
 GROVER E. HOLT
 G. T. HUNTER
 C. L. JONES
 D. W. JONES
 W. V. JONES
 C. W. KIPKA
 W. L. LOCKHART
 PAUL LOESSI
 DAVID LONG
 JOHN LOWRY
 J. W. MATLOCK
 FRANK MITCHELL
 R. K. MOORE
 JEWELL PRESNELL
 J. W. RICH
 ROY A. RICHARDSON
 A. A. RODRIGUEZ

ROY ROLLINS
 J. V. SIMPSON
 R. L. SHOFFNER
 ELWOOD SMITH
 ROLAND SMITH
 A. C. STEPHENSON
 W. B. SPOON
 NANNIE STOUT
 BESSIE MAE STILLEY
 R. E. TALLEY
 CORNELIA TROXLER
 H. W. TRUITT
 J. W. VANHOOK
 G. P. VICKERS
 C. A. WALKER
 Z. T. WALKER
 R. P. WATSON
 ELIZA MAE DURHAM





French Club

OFFICERS

FERN LASLEY	<i>President</i>
T. G. ANDREWS	<i>Vice-President</i>
REBECCA TAYLOR	<i>Secretary-Treasurer</i>

MEMBERS

LOUISE McPHERSON
 BETTY AMICK
 RUTH STEPHENS
 LOUISE SPRINGS
 DALPHINE IRBEY
 CURVIE KEITH
 HELEN TURNER
 T. R. BENTON
 O. W. DEALON
 E. F. ISLLEY

EVELYN RICHARDSON
 MARY LINEBERGER
 RUTH GREGORY
 ELSIE STORY
 NELLIE WHITE
 ROY RICHARDSON
 CECIL WATTS
 MARGARET LINBERGER
 IDELL JONES
 FRANCES RING

RODMAN LILLEY
 CATHERINE LEMMOND
 WALDO HARTLEY
 TAFT WILLIAMS
 TWIMAN ANDREWS
 ELBERT RHODES
 VIOLA WORSLEY
 ELLA MARIE KEYSER
 ELIZABETH HARDEN
 ADNA LANE BRUTON



Domestic Art Class

MISS SUE RAINE, *Instructor*

MEMBERS

FRANCES ALDRIDGE

DORIS APPLE

ALBERTA AUMAN

MARY BARNWELL

FLORENCE BROWNE

CLARICE DICKERSON

MAPLE LAWRENCE

LUCY MAE PAINTER

EDNA TYSON

FLORENCE BROWN

RACHEL JOHNSTON

MYDE NEWSON





Domestic Science Class

MISS SUE RAINE, *Instructor*

MEMBERS

MARY ALCORN	LANNIE MCINTYRE
MARGARET BROWN	ANNIE RUE PACE
ELIZABETH CARPER	MARY ANN RUDD
SALLIE ELDER	ELIZABETH SLACK
RUTH GREGORY	HELEN TURNER
EUGENIA HILLIARD	SUE ELLA WATTS
LOUISE HOUGH	DORIS APPLE
DALPHINE IRBEY	MARGARET BRUTON

MYDE NEWSON
 CLARA SHARPE
 WILLIE BELLE WICKER
 MARY BRANNOCK
 FLORENCE BROWN
 ELIZABETH STORY
 CLARA UNDERWOOD
 ORA BRADY



Music Department

PROF. C. JAMES VELIE *Director of Music*
 MISS MARY ANN BENN *Piano and Voice*
 PROF. DAVID BROWN HARRRELL *Piano and Voice*
 MRS. C. JAMES VELIE *Piano and Voice*
 PROF. ELBERT RHODES *Band Instruments*

STUDENTS

ELIZABETH BARNEY
 WINIFRIED BARNEY
 HELEN BARNEY
 MABEL BARRETT
 RUTH BATESON
 LARAE BENNETT
 LUCY BOONE
 DOROTHY BRADLEY
 ANNA VIRGINIA BRITT
 LOIS CORBITT
 MERRIL CAVINSE
 ELMER COPELAND
 FRANCES CHANDLER
 NANCY CADDELL
 TOM CATES
 VYZELLE DENSON
 FRANCES DEVINNEY
 DOLPHINE IREY
 MARIE GRAF
 CLEO GUILLIAM
 ELIZABETH HARDEN

ETTIE HARVEY
 ERMA LOU HOGAN
 IRENE HOOK
 SARA VIRGINIA HOOK
 MARY NELL JAY
 VIRGINIA JAY
 IDELL JONES
 ELLA KEYSER
 HELEN KING
 AGNES KING
 ALLEN LAXTON
 MAEDELLE LAMBETH
 RODMAN LILLY
 JOSIE LOY
 EDITH LOCKEY
 PAUL MAGEE
 REBECCA MATLOCK
 MARGARET MOORE
 FLETCHER MOORE
 JUANITA MORGON
 S. E. MADREN
 BESSIE MCKINNEY
 LOIS McADAMS

J. E. NAPIER
 MADELINE NICHOLSON
 LALA PATTERSON
 JEWELL PRESNELL
 FRANCES RING
 JAMES STEWART
 RUTH SMITH
 MARGARET STYERS
 REBECCA TAYLOR
 CORNELIA TROXLER
 MRS. M. C. TERRELL
 GARDENER UNDERHILL
 DOLL UNDERWOOD
 FRANCES WARD
 EUGENIA WARD
 NELLIE WHITE
 RUTH WICKER
 VIOLA WORSLEY
 DOROTHY WILLIAMS
 BERNICE WHITESSELL
 GLENN WOMBLE.



Fine Arts Class

OFFICERS

ESTELLE WILLIAMS	<i>President</i>
MERRILL CAVINESS	<i>Vice-President</i>
RUTH ALEXANDER	<i>Secretary</i>
WAUTELL LAMBETH	<i>Treasurer</i>

MEMBERS

MRS. J. L. FOSTER	MARGARET WALKER
RUTH ALEXANDER	LEVI WILKINS
WAUTELL LAMBETH	MRS. ALMA DIXON
ESTELLE WILLIAMS	FERN LASLEY
CHRISTINE WICKER	ALMA KIMBALL

ANNIE LAURA HOLLAND
 MERRILL CAVINESS
 ANNIE LOU BRANNOCK
 EDWARD McPIERSON
 E. WILLIAMS



Virginia Club

OFFICERS

G. E. RING	<i>President</i>
ALBERTA ROBERTS	<i>Vice-President</i>
K. B. HOOK	<i>Secretary-Treasurer</i>

MEMBERS

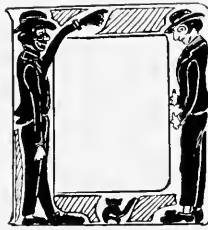
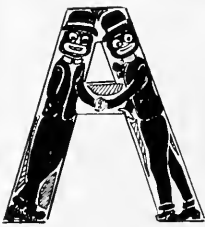
EITIE K. HARVEY	EVELYN RICHARDSON
CHARLOTTE ROBERTS	ANN P. RAWLES
ANNA VA. BRITT	L. R. CATHER
J. H. ROUNTREE	A. A. DOFFLEMYER
MARY R. JONES	LUCILLE GREENE
M. L. MOSELY	E. F. RHODES
R. G. LILLY	MERRILL CAVINESS
D. C. BOONE	E. E. COPELAND
EVELYN YATES	R. A. RICHARDSON
MARGARET L. ROBERTSON	ELIJAH JONES
R. C. WIGHTMAN	J. R. CHANDLER
ANNIE L. HOLLAND	DOROTHY WILLIAMS
J. H. SMITH	VYZELLE DENSON
FRANCES RING	GLADYS WHITE





Certificate and Diploma Students

PAUL R. MAGEE	<i>Certificate in Piano</i>
ELLA MARIE KEYSER	<i>Certificate in Voice</i>
EDITH LOCKEY	<i>Diploma in Piano</i>
LUCY BOONE	<i>Diploma in Voice</i>



TO THE STUDENT BODY OF
ELON COLLEGE AND HER ALUMNI:
THE VARIOUS PUBLICATIONS
OF THIS COLLEGE WISH TO EN-
COURAGE THE STUDENTS AND
THEIR FRIENDS TO READ AND
PATRONIZE OUR ADVERTISERS.
REMEMBER THEY ARE RESPONSIBLE
TO NO SMALL DEGREE FOR
THE SUCCESS OF OUR COLLEGE
PUBLICATIONS.

Editor.

COMPLIMENTS

OF

J. S. WHITE DRUG CO.



ELON COLLEGE, N. C.

A WISE MAN GROWN OLD

A wise young man looks into the future and plans for the "Old Man" he will be some day. The plan many wise young men are using to "finance" the Old Man they will be is old age Endowment life insurance.

Ask a Pilot agent about our Endowment plan for young men. Perhaps the Old Man will have reason to be glad that the Young Man invested.



PILOT LIFE INSURANCE COMPANY

GREENSBORO, N. C.

WE SERVE

We crave no higher privilege than to furnish the servant for the modern home. It does the cooking, refrigerating, sweeping, washing, ironing and many other tasks.

ELECTRICITY

The Servant in the Home

NORTH CAROLINA PUBLIC SERVICE COMPANY

BURLINGTON, N. C.

Carolina's Largest Photograph Concern

SIDDELL STUDIO

RALEIGH, N. C.

Official Photographers for
1929 PHIPSICLI

Dress Well and Succeed

Apparel proclaims the man. To be finished in the fine arts is essential to success. To proclaim your fitness, the fashions in the assortment at the Vanstory Store are designed for that duty.

Vanstory
CLOTHING COMPANY
What it A' Knight, Free and Right

Jefferson Standard Building

GREENSBORO, N. C.



Alamance Laundry and Dry Cleaners

WE DO IT BETTER

Phone 560, 561

ROSENBLOOM'S

YOUNG MEN'S SHOP
Quality Wearing Apparel for
Men and Boys

Phone 502

Burlington, N. C.

Your Charge Account Invited at
THE JEWEL BOX, Inc.

Burlington, N. C.

10% Discount to All Elon Students

Prof. Johnson's Little Girl: "Father,
play blind man with me?"

Prof.: "No, my dear; that is how I
met your mother."

DR. J. B. NEWMAN

Dentist

BURLINGTON, N. C.
Office in the Fonville Bldg.

JOHN SHOFFNER, President
C. E. FOGLEMAN, Vice-President
W. C. ELDER, Secretary and Treasurer

**Perfection Hosiery
Mills, Inc.**

Manufacturers

FINE SEAMLESS HOSIERY

BURLINGTON, N. C.

"B. V. MAY"

SOX AND STOCKINGS

**MAY'S HOSIERY
MILLS**

Incorporated

BURLINGTON, N. C.

A. D. Pate & Co.

BOOK AND COMMERCIAL
PRINTING

Telephone 216

CORNER DAVIS AND WORTH STS.
BURLINGTON, N. C.

The
Chas. H. Elliott Co.

*The Largest College Engraving House in
the World*

*Commencement
Invitations*

Class Day Programs

Class Pins and

Rings

Dance Programs and

Invitations

Menus

Dance Favors and Novelties

Fraternity Stationery

Calling Cards

*Seventeenth Street and Lehigh Avenue
Philadelphia*



Your Education Will Not Be Complete
Without a Life Insurance Policy

R. O. BROWNING, General Agent
PILOT LIFE INSURANCE CO.

Sellers & Sons

STYLE CENTER FOR MEN'S AND
WOMEN'S WEAR

SINCE 1876

BURLINGTON, N. C.

**EFIRD'S
Department Store**

LADIES' READY-TO-WEAR
MEN'S CLOTHING AND
FURNISHINGS

"Quality with Price"
BURLINGTON, N. C.

John Lowery: "That swell-
looking Presnell girl is dead from
her neck up."

Bill Van Hook: "Well, she can
bury her head in my arms any
time."

**C. A. LEA
TAXI AND U-DRIVE-IT**

Prompt Service
Phone 777 Burlington, N. C.

DO YOUR SHOPPING AT
BELK STEVENS CO.

Burlington's Shopping Center
Cor. Main and Davis Phone 52

Welcome Elon Students
RAINBOW CAFE
GREENSBORO, N. C.

GRAND THEATER
BURLINGTON, N. C.



FOR HEALTH'S SAKE

Buy Fresh Fruits and Vegetables
from the best equipped cold storage
produce house in the South.

W. I. Anderson & Co.
GREENSBORO, N. C.

MEMORY BOOKS

What memories are sweeter than those of
school days? Keep a record, that the joy
may live long after the days are past. We
have many beautiful designs at very at-
tractive prices.

**WILLS BOOK AND
STATIONERY CO.**
GREENSBORO, N. C.

THE VELVET KIND
ICE CREAM

Cream of the South

Burlington, N. C. Phone 46

H. W. PETERS CO., INC.

Boston, Mass.
OFFICIAL JEWELERS
Class Rings, Pins, Emblems, Favors
Invitations
J. H. Miller, District Manager
District Office, Durham, N. C.

COLLEGIATE APPAREL FOR THE
GIRLS

10% Discount to Elon Students

JERRY'S SPORT SHOPPE

Burlington, N. C.

BUY AT
Odell's
WHERE QUALITY TELLS

Mebane Shoe Company

"The Reliable Shoe Store"



Main St. Burlington, N. C.

Belle: "Do you think you'll be doing anything tonight?"

Roland: "No."

Belle: "Then don't come over."

* * *

Doster (shyly): "I can read your thoughts, Alberta."

Alberta (cooly): "Then what makes you sit so far away?"

ACME CLEANERS

Dyers and
Hatters

"You Must Be Pleased"

GUARANTEED DRY CLEANING

Hats Blocked and Cleaned, 75c

PHONE 145-W

BURLINGTON, N. C.

FRATERNITY, COLLEGE AND
CLASS JEWELRY

Commencement Announcements
Favors

L. G. Balfour Co.

*Manufacturing Jewelers and
Stationers*

ATTLEBORO, MASS.

Official Jewelers to

Pi Kappa Tau, Beta Omicron Beta, Tau
Zeta Phi, Delta Upsilon Kappa, Sigma
Phi Beta, Iota Tau Kappa, and Alpha Pi
Delta.

Elon College

CO-EDUCATIONAL



ONE OF THE MANY ELON COLLEGE BUILDINGS

Elon College offers superior educational advantages. The buildings are new, equipment new and of the very best type, laboratory facilities equal to any college in the South; member of the Southern Association of Colleges, strong Christian faculty, and fine Christian atmosphere prevailing on the campus. Special courses in religious education and Christian work are offered to train laymen and ministers in the work of our denomination.

Fall term opens September 5, 1929.

For Catalogue and View-Books, address

C. M. CANNON, Registrar

ELON COLLEGE,

NORTH CAROLINA

"Christian Character First and Always at Elon College"



The
MAROON & GOLD

The Voice of the Student Body



HELP BOOST THE CIRCULATION BY
SENDING A COPY HOME EACH WEEK



Those Who Advertise in Our College Weekly
Should Be Given Preference
When Shopping

*The North State Engraving
Company extends its con-
gratulations to the staff of
1928-1929 and tenders its
regards to the staff of
1929-1930*

A GOOD DRUG STORE IN
A GOOD TOWN

**Burlington Drug
Company**

Opposite Carolina Theatre
Main St. BURLINGTON, N. C.

Motorist: "I'm very sorry I ran over your hen. Will a dollar make it right?"

Farmer: "Waal, now, better make it two. Y'see one o' my roosters was mighty fond o' that hen, an' the shock mought kill him too."

Latham: "I hear that Coach called you a blockhead."

Rollins: "No, it wasn't that bad."

Latham: "What did he really say?"

Rollins: "'Put on your hat; here comes a woodpecker.'"

Terrell's Lunch
"The Students' Shop"

Hot Lunches, Sandwiches, Cold Drinks
Ice Cream, Cigarettes and Tobacco

"STORE OF VALUE"
J. D. & L. B. WHITTED CO.
Incorporated
Dry Goods and Notions, Gents' Furnish-
ing Goods, Shoes, Hats, Ladies'
Ready-to-Wear, Etc.
BURLINGTON, N. C.

First Stenog: "Dearie, how short should my skirt be?"

Second Stenog: "Let your chassis be your guide."

Rubber: "What is your line?"

Bootlegger: "I'm in the public utility game."

Rubber: "How's that?"

Bootlegger: "Oh, I help to keep the public lit up."

* * *

Mrs. Harper: "Professor, do you think I'll ever be able to do anything with my voice?"

Prof. Velie: "Well, it might come in handy in case of a shipwreck."

* * *

Crusty: "Spring is the time for love."

Efird: "Well, it's not so bad during the other seasons either."

MEET YOUR FRIENDS
AT
A Place With a Friendly
Atmosphere

**UNITED DOLLAR
STORE**

"Elon Students Always Welcome"

STUDENTS' ACTIVITY BUDGET

"For the Students, By the Students"

Advantages of the Budget

1. Puts all Publications and Activities on sound financial basis.
2. Saves Money for Each Student.
3. Every student gets a *Maroon and Gold* and an Annual.
4. Insures the publishing of the *Maroon and Gold*, *Phipsicli*, and the backing of other activities.
5. Builds college spirit.



Students, this is purely a student proposition. As individuals, let's make the Budget System a success.

Can You Imagine—

Bill Vanhook, making a passing grade on business law?
 Doll Underwood, being still for one hour?
 Jim Brown, being President of Elon?
 "Chubby" Walker, ever telling a clean joke?
 C. P. Thompson, hugging a girl?
 Mrs. George Robertson, wielding a rolling pin?
 Eva Sykes, raking straw?
 C. W. Kipka, President of University of Chile?
 Birdie Rowland, ever being fat?
 R. E. Sims, ever being serious?
 Florence Brown, being first lady of Elon?
 Phalti Lawrence, being a horse trader?
 Romie Davis, director of music at Elon?
 Ollie Deaton, being in a hurry?
 Fern Lasley, being with the Salvation Army?
 Marlon Nalle, giving lessons in smiling?
 Jimmie Foster, teaching Spanish?
 Ora Brady, vamping the boys?
 Hurley Shepherd, giving dancing lessons?
 Cecil Cox, falling in love?
 Allen Laxton, cutting a freshman's hair?
 Ramond Hardy, being a sheik?
 David Sheperd, using profanity?
 Eli Regan, being told anything about basketball?
 Lucy Boone, not having a "Hook" on her arm?
 Mary Brannock, being as large as Dean Savage?
 Margaret Bruton, being bashful?
 Edith Lockey, cutting classes?
 Twiman Andrews, being Dr. Amich's chauffeur?
 L. R. Cather, teaching aesthetic dancing?
 Carl Clapp, robbing banks?
 Ruth Floyd, speaking above a whisper?
 Madge Green, courting Standfield?
 Ettie Harvey, growing taller?
 Margaret Hornaday, having her social privileges removed?
 Ruby Huffines, being a movie actress?
 Margaret Johnston, being in love with Dan Boone?
 Dace Jones, winning a baby prize?
 Silas Madren, being a bootlegger?
 Marion Nethery, selling ice cream to Eskimos?
 Dan Newman, training for basketball?
 E. F. Rhodes, striking a tune on a violin?
 G. E. Ring, doing anything besides collecting?
 Charlotte Roberts, being a circus wire-walker?
 Bob Ruston, selling buggy whips in Detroit?
 Lena Russell, flunking French?
 Elwood Smith, joking?
 Gladys Spoon, being in love with "Bodie Clark"?
 A. C. Stephenson, socializing at the gate?
 C. J. Thomas, saying "I'll be dog"?
 Jewel Truitte, going on the stage?
 Gardener Underhill, having cigarettes?
 Ruth Wicker, being a missionary?
 G. F. Womble, being a heart-breaker?
 H. T. Ebird, being editor of this book?



The South's Foremost College Annual "Engravers"

OUR SUPREMACY

IN THE SOUTHERN
YEAR-BOOK FIELD
IS THE RESULT OF
PERSONAL SERVICE

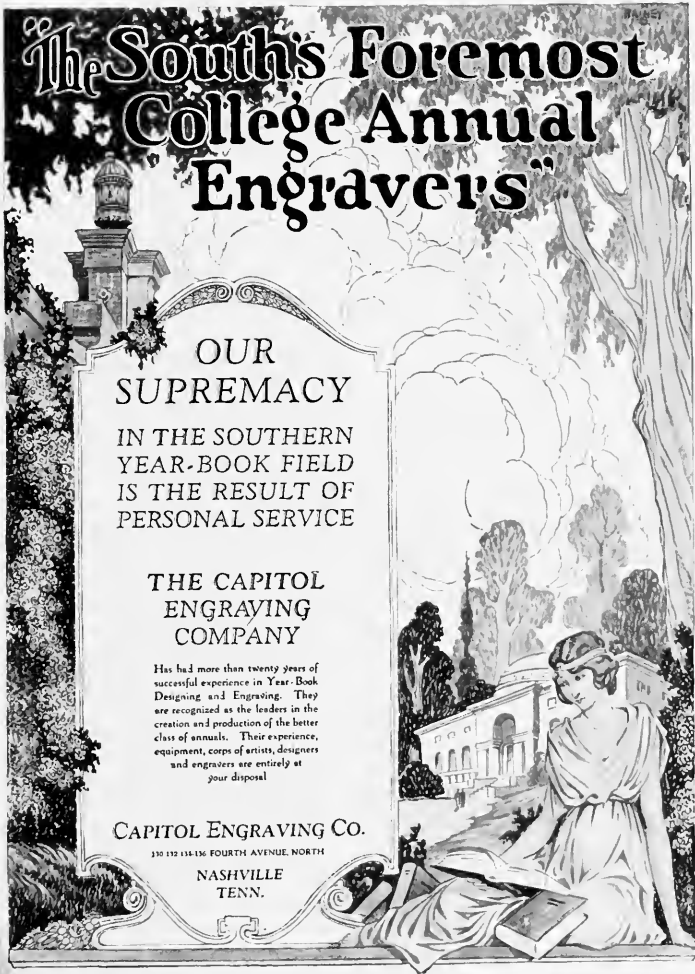
THE CAPITOL ENGRAVING COMPANY

Has had more than twenty years of
successful experience in Year-Book
Designing and Engraving. They
are recognized as the leaders in the
creation and production of the better
class of annuals. Their experience,
equipment, corps of artists, designers
and engravers are entirely at
your disposal

CAPITOL ENGRAVING CO.

110 112 114 116 FOURTH AVENUE, NORTH

NASHVILLE
TENN.



PHYSICI

THIS BOOK PRINTED BY BENSON



LARGEST COLLEGE ANNUAL
PUBLISHERS IN THE WORLD
HIGHEST QUALITY WORKMANSHIP
SUPERIOR EXTENSIVE SERVICE

BENSON
PRINTING CO.
NASHVILLE
TENN.

COLLEGE ANNUAL HEADQUARTERS

Autographs



